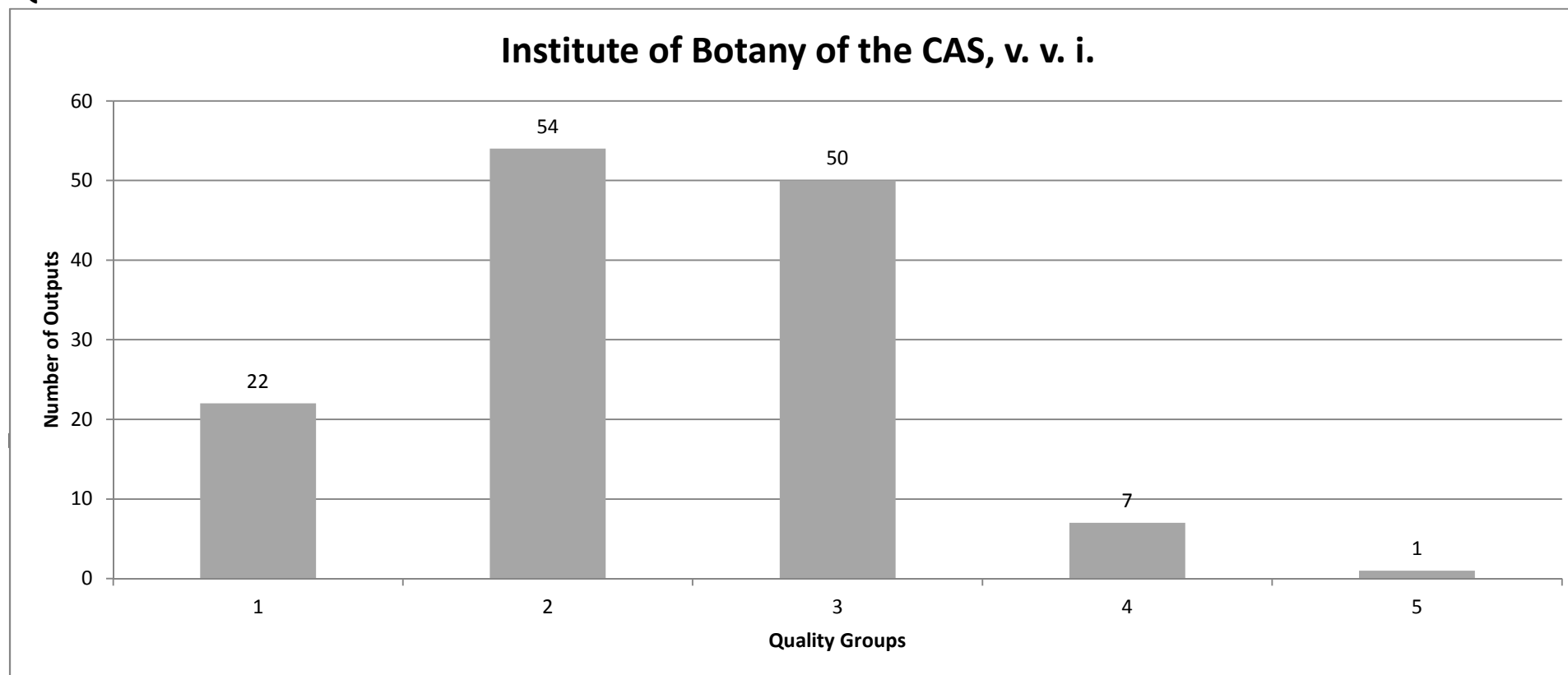


QUALITY PROFILES - SUMMARY GRAPH



Quality Groups:

(1): Quality that is **world-leading** in terms of originality, significance and rigour.

(2): Quality that is **internationally excellent** in terms of originality, significance and rigour but which falls short of the highest standards of excellence.

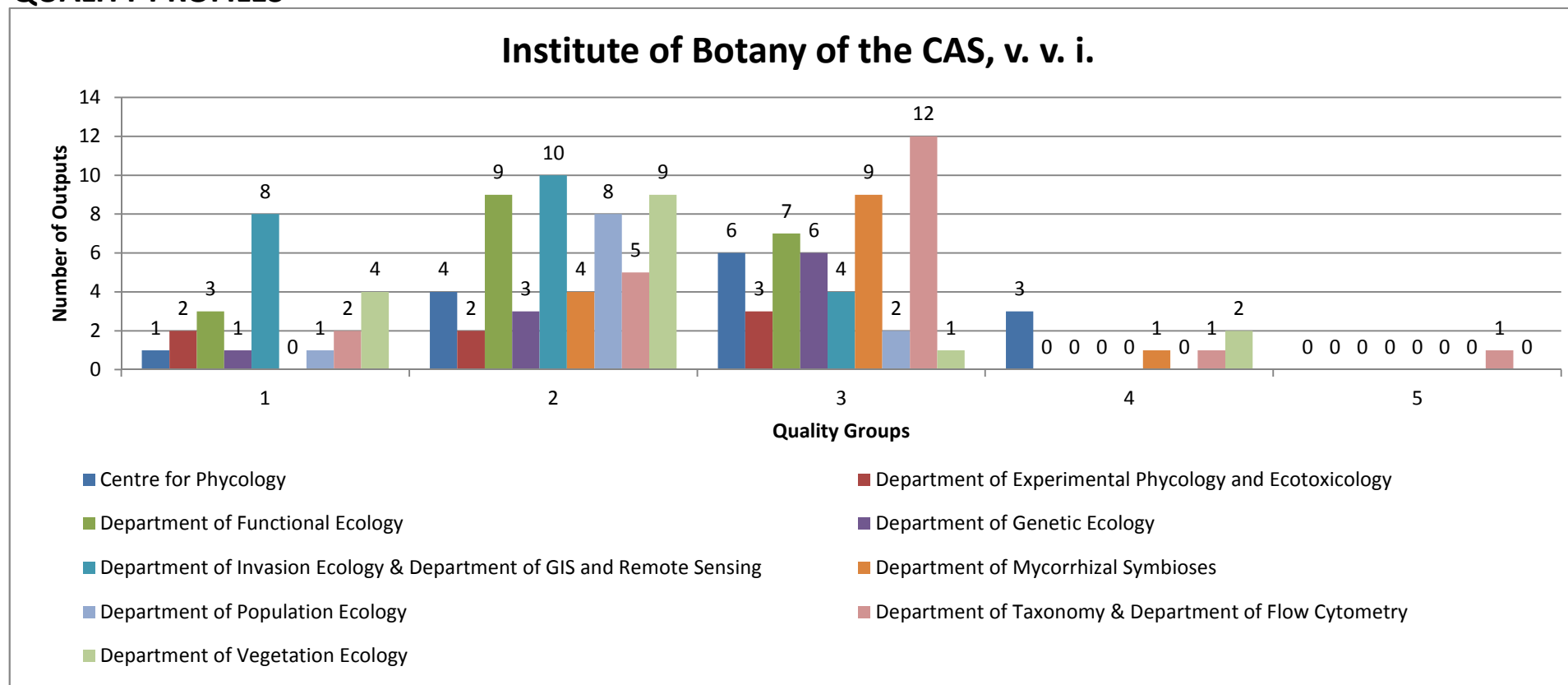
(3): Quality that is **recognized internationally** in terms of originality, significance and rigour.

(4): Quality that is **recognized nationally** in terms of originality, significance and rigour.

(5): Quality that falls **below the standard** of nationally recognized work. Or work which does not meet the published definition of research for the purposes of this assessment.

This plot is presented as an aggregate of data from the Phase I of evaluation for convenience of evaluators in the Phase II.

QUALITY PROFILES



Quality Groups:

(1): Quality that is **world-leading** in terms of originality, significance and rigour.

(2): Quality that is **internationally excellent** in terms of originality, significance and rigour but which falls short of the highest standards of excellence.

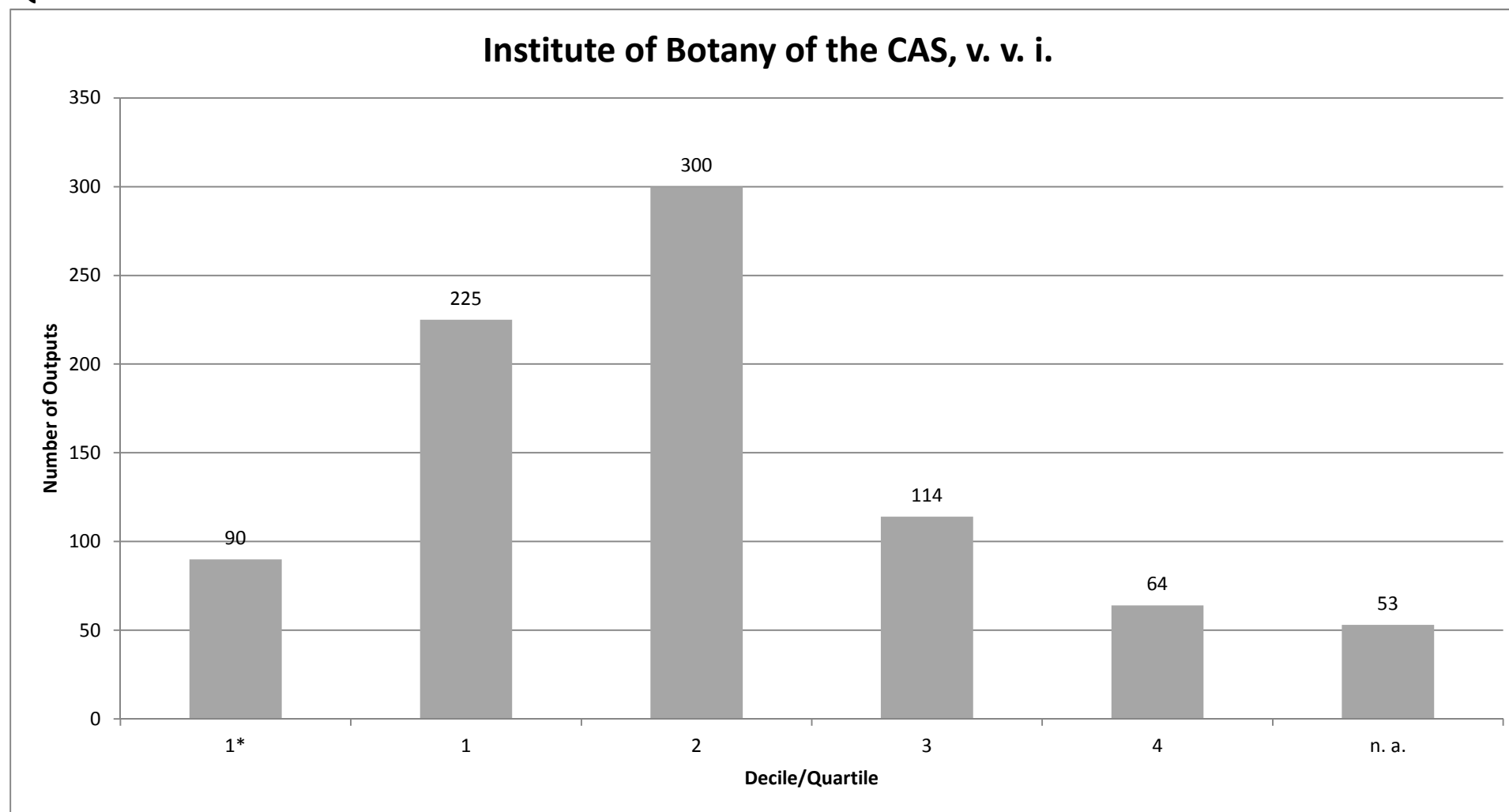
(3): Quality that is **recognized internationally** in terms of originality, significance and rigour.

(4): Quality that is **recognized nationally** in terms of originality, significance and rigour.

(5): Quality that falls **below the standard** of nationally recognized work. Or work which does not meet the published definition of research for the purposes of this assessment.

This plot is presented as an aggregate of data from the Phase I of evaluation for convenience of evaluators in the Phase II; the columns represent outputs (not productivity) and cannot be directly compared each other.

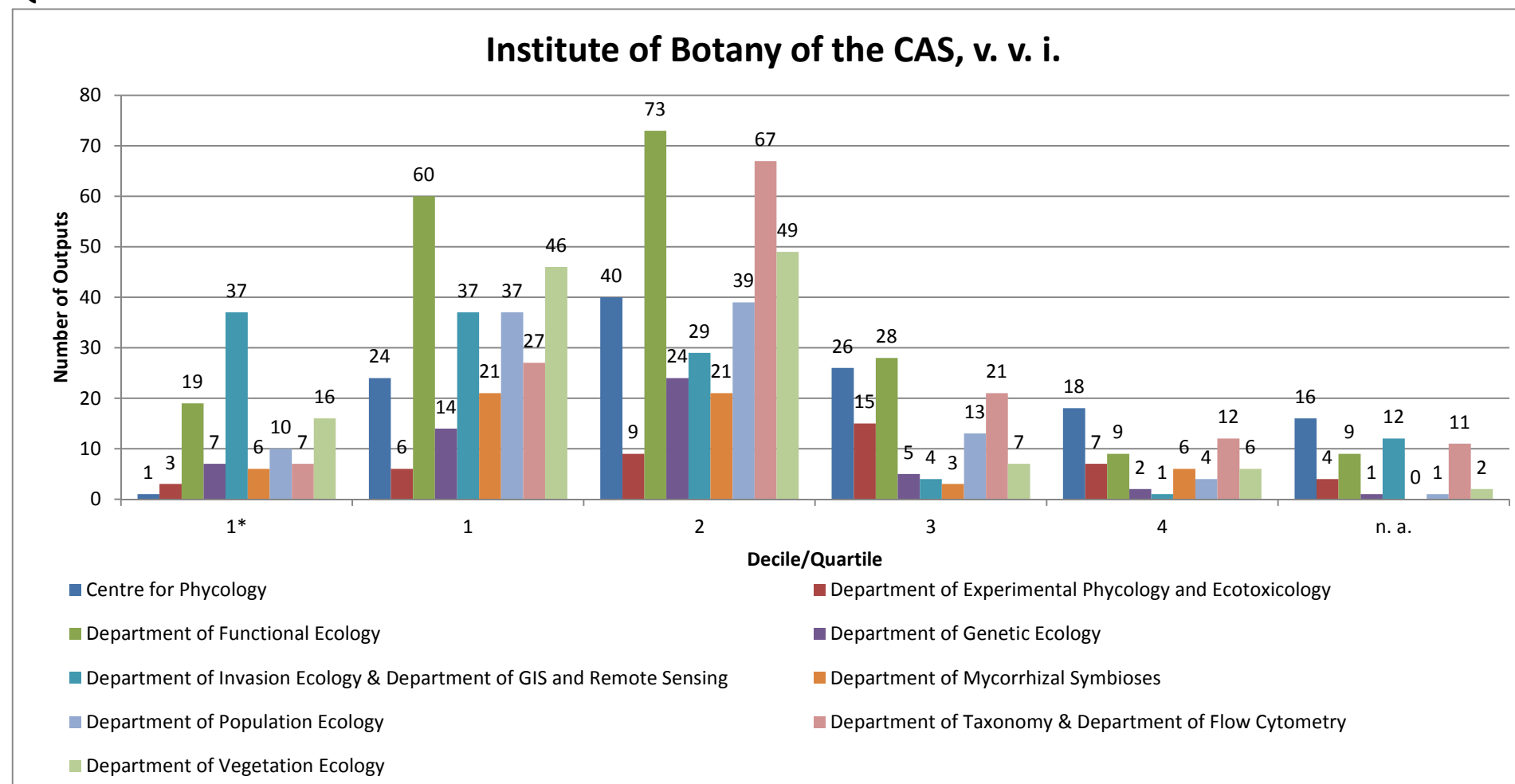
QUALITY OF OUTPUTS BY JOURNALS - SUMMARY GRAPH



Number of outputs in top decile (1*) and quartiles (1-4) by AIS of journals; n. a. - outputs in journals without AIS; if the output is assigned to more than one field, the mean value of quartile is taken (values from 0,1 to 0,5 rounded down).

This plot is presented as an aggregate of bibliometric data for convenience of evaluators.

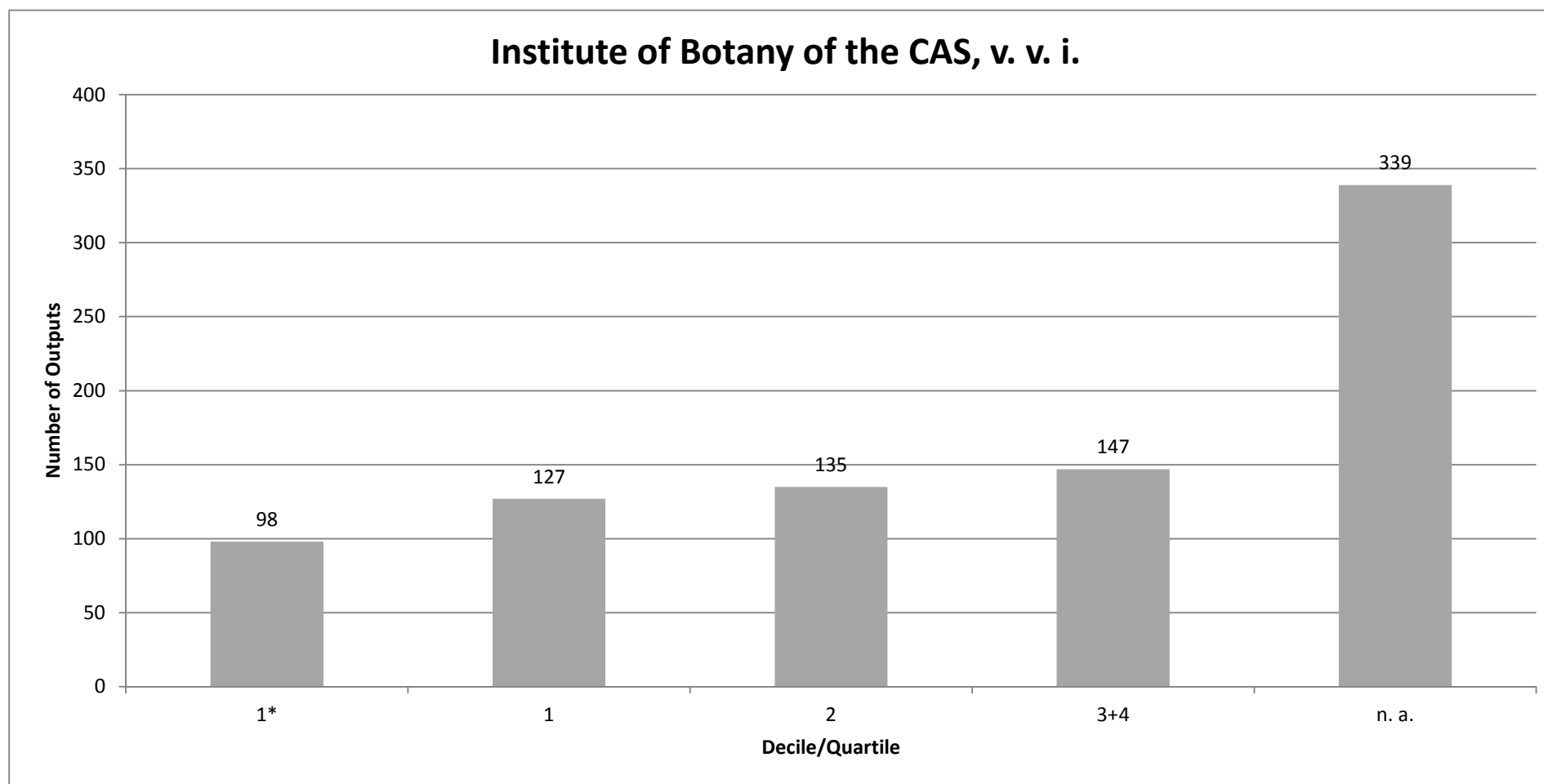
QUALITY OF OUTPUTS BY JOURNALS



Number of outputs in top decile (1*) and quartiles (1-4) by AIS of journals; n. a. - outputs in journals without AIS; if the output is assigned to more than one field, the mean value of quartile is taken (values from 0,1 to 0,5 rounded down).

This plot is presented as an aggregate of bibliometric data for convenience of evaluators; the columns represent outputs (not productivity) and cannot be directly compared each other.

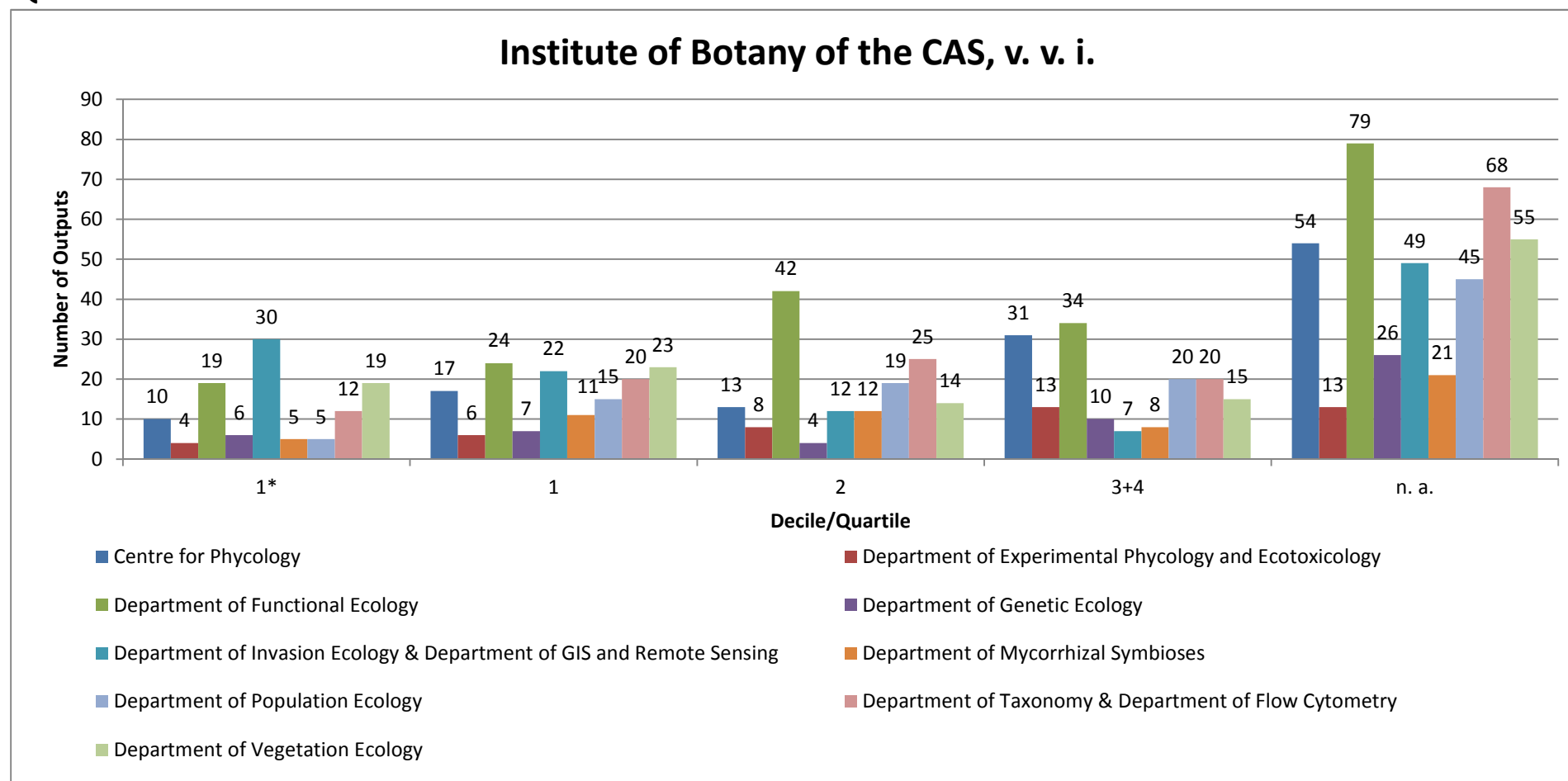
QUALITY OF OUTPUTS BY INTENSITY OF CITATIONS - SUMMARY GRAPH



Number of outputs in the top decile (1*) and in quartiles (1, 2, 3+4) of the list of outputs ordered by the number of citations; n. a. - the number of outputs in the field is low and/or the number of citations is not sufficient for relevant judgement; if the output is assigned to more than one field, the mean value of quartile is taken (values from 0,1 to 0,5 rounded down).

This plot is presented as an aggregate of bibliometric data for convenience of evaluators.

QUALITY OF OUTPUTS BY INTENSITY OF CITATIONS



Number of outputs in the top decile (1*) and in quartiles (1, 2, 3+4) of the list of outputs ordered by the number of citations; n. a. - the number of outputs in the field is low and/or the number of citations is not sufficient for relevant judgement; if the output is assigned to more than one field, the mean value of quartile is taken (values from 0,1 to 0,5 rounded down).

This plot is presented as an aggregate of bibliometric data for convenience of evaluators; the columns represent outputs (not productivity) and cannot be directly compared each other.

Evaluation of the Research and Professional Activities of the Institutes of the Czech Academy of Sciences for 2010–2014

RESULTS OF THE PHASE I. AND BIBLIOMETRIC PARAMETERS

Institute: Institute of Botany of the CAS, v. v. i.

Team: Department of Invasion Ecology & Department of GIS and Remote Sensing

Head: Prof. RNDr. Petr Pyšek, CSc.

Total number of outputs : 230 **Evaluated outputs :** 22 (0) **Outputs for bibliometry :** 120 **Large collaborations outputs:** 2

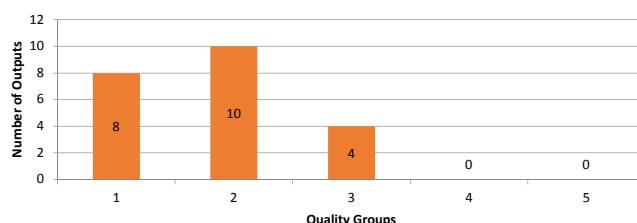
Quality Groups of Outputs (Results of the Phase I.)

Quality	1	2	3	4	5
Outputs	8	10	4	0	0

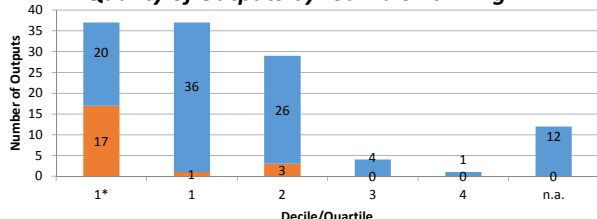
Quality Groups:

- (1): Quality that is **world-leading** in terms of originality, significance and rigour.
- (2): Quality that is **internationally excellent** in terms of originality, significance and rigour but which falls short of the highest standards of excellence.
- (3): Quality that is **recognized internationally** in terms of originality, significance and rigour.
- (4): Quality that is **recognized nationally** in terms of originality, significance and rigour.
- (5): Quality that falls **below the standard** of nationally recognized work. Or work which does not meet the published definition of research for the purposes of this assessment.

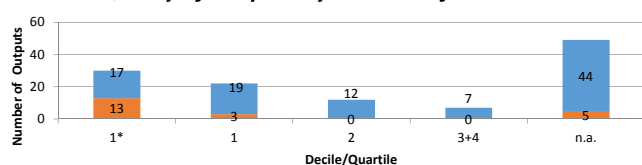
Quality Profile



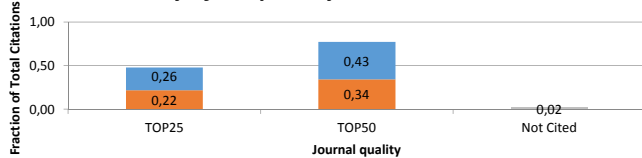
Quality of Outputs by Journals Ranking



Quality of Outputs by Number of Citations



Quality of Outputs by Citation Sources



Field Structure of Outputs

Field Structure of Outputs	Outputs
PLANT SCIENCES	27
ECOLOGY	22
BIODIVERSITY CONSERVATION	21
MULTIDISCIPLINARY SCIENCES	16
FORESTRY	7
ENVIRONMENTAL SCIENCES	6
BIOLOGY	4
GEOGRAPHY, PHYSICAL	2
REMOTE SENSING	2
BIOCHEMISTRY & MOLECULAR BIOLOGY	2
ARCHAEOLOGY	2
SOIL SCIENCE	2
ENGINEERING, ENVIRONMENTAL	2
FISHERIES	1
ENERGY & FUELS	1
ZOOLOGY	1
AGRONOMY	1
ENTOMOLOGY	1

Total number of outputs: selected types of outputs published in 2010-2014 and registered in the institutional research information system: journal article, monograph, monograph chapter, proceedings paper, patent, utility model, industrial design, prototype, functional specimen, norms and directives, specialized map, realized certified methodology, software, pilot plant, verified technology, plant breed/variety.

Evaluated outputs: outputs submitted by the team and evaluated in the Phase I (value in the brackets shows number of outputs submitted by the team but not evaluated in the Phase I).

Outputs for bibliometry: publications in 2010-2014 registered in the Web of Science; document type: article, review or proceedings paper; large collaborations outputs are also included.

Large collaborations outputs: publications in 2010-2014 with more than 30 authors registered in the Web of Science; document type: article, review or proceedings paper.

Quality Profile: number of evaluated outputs vs quality groups (5 groups); 'world-leading' quality denotes an absolute standard of quality in each field and subfield; 'world leading', 'internationally' and 'nationally' in this context refer to quality standards; they do not refer to the nature or geographical scope of particular subjects, nor to the focus of research nor its place of dissemination; for example, research which is focused on the subject specific to the Czech Republic might be of 'world leading' standard, on the contrary, work with an international focus might not be of 'world leading, internationally excellent or internationally recognized' standard.

Quality of Outputs by Journals Ranking: number of outputs in top decile (1*) and quartiles (1-4) by AIS of journals; n. a. - outputs in journals without AIS; if the output is assigned to more than one field, the mean value of quartile is taken (values from 0,1 to 0,5 rounded down); orange: outputs submitted by the team to the Evaluation, blue: other outputs by the team.

Quality of Outputs by Number of Citations: number of outputs in the top decile (1*) and in quartiles (1, 2, 3+4) of the list of outputs ordered by the number of citations; n. a. - the number of outputs in the field is low and/or the number of citations is not sufficient for relevant judgement; if the output is assigned to more than one field, the mean value of quartile is taken (values from 0,1 to 0,5 rounded down); orange: outputs submitted by the team to the Evaluation, blue: other outputs by the team.

Quality of Outputs by Citation Sources: fraction of citations of all outputs in the top quartile (TOP25) or the top half (TOP50) of list of journals ordered by AIS; fraction of "not cited" outputs is added; orange: outputs submitted by the team to the Evaluation, blue: other outputs by the team.

Field Structure of Outputs: number of outputs of the team in different fields; if the output is assigned to more than one field, the field where the publication performs best (assessed by Quality of Outputs by Journals Ranking) is taken; the table shows up to 30 fields.

Evaluation of the Research and Professional Activities of the Institutes of the Czech Academy of Sciences for 2010–2014

RESULTS OF THE PHASE I. AND BIBLIOMETRIC PARAMETERS

Institute: Institute of Botany of the CAS, v. v. i.

Team: Department of Taxonomy & Department of Flow Cytometry

Head: Mgr. Zdeněk Kaplan, Ph.D.

Total number of outputs : 333 **Evaluated outputs :** 21 (0) **Outputs for bibliometry :** 145 **Large collaborations outputs:** 1

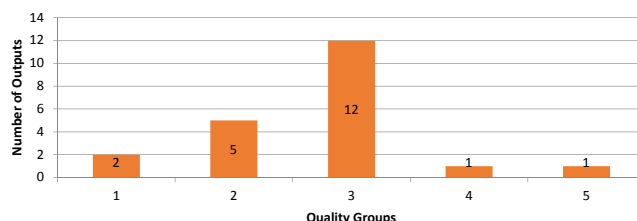
Quality Groups of Outputs (Results of the Phase I.)

Quality	1	2	3	4	5
Outputs	2	5	12	1	1

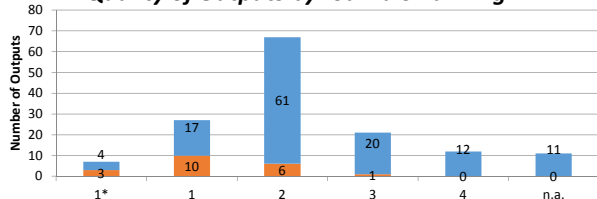
Quality Groups:

- (1): Quality that is **world-leading** in terms of originality, significance and rigour.
 (2): Quality that is **internationally excellent** in terms of originality, significance and rigour but which falls short of the highest standards of excellence.
 (3): Quality that is **recognized internationally** in terms of originality, significance and rigour.
 (4): Quality that is **recognized nationally** in terms of originality, significance and rigour.
 (5): Quality that falls **below the standard** of nationally recognized work. Or work which does not meet the published definition of research for the purposes of this assessment.

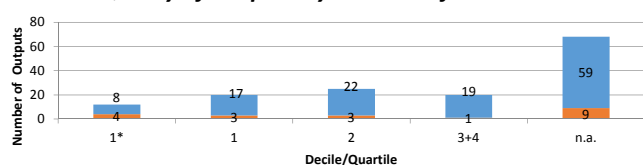
Quality Profile



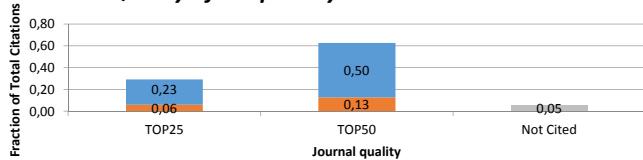
Quality of Outputs by Journals Ranking



Quality of Outputs by Number of Citations



Quality of Outputs by Citation Sources



Field Structure of Outputs

Field Structure of Outputs	Outputs
PLANT SCIENCES	102
MYCOLOGY	15
MULTIDISCIPLINARY SCIENCES	5
BIOCHEMISTRY & MOLECULAR BIOLOGY	4
BIODIVERSITY CONSERVATION	3
AGRONOMY	3
MICROBIOLOGY	2
ECOLOGY	2
MARINE & FRESHWATER BIOLOGY	2
BIOLOGY	1
GEOSCIENCES, MULTIDISCIPLINARY	1
BIOTECHNOLOGY & APPLIED MICROBIOLOGY	1
EVOLUTIONARY BIOLOGY	1
HORTICULTURE	1
SOIL SCIENCE	1
GEOGRAPHY, PHYSICAL	1

Total number of outputs: selected types of outputs published in 2010-2014 and registered in the institutional research information system: journal article, monograph, monograph chapter, proceedings paper, patent, utility model, industrial design, prototype, functional specimen, norms and directives, specialized map, realized certified methodology, software, pilot plant, verified technology, plant breed/variety.

Evaluated outputs: outputs submitted by the team and evaluated in the Phase I (value in the brackets shows number of outputs submitted by the team but not evaluated in the Phase I).

Outputs for bibliometry: publications in 2010-2014 registered in the Web of Science; document type: article, review or proceedings paper; large collaborations outputs are also included.

Large collaborations outputs: publications in 2010-2014 with more than 30 authors registered in the Web of Science; document type: article, review or proceedings paper.

Quality Profile: number of evaluated outputs vs quality groups (5 groups); 'world-leading' quality denotes an absolute standard of quality in each field and subfield; 'world leading', 'internationally' and 'nationally' in this context refer to quality standards; they do not refer to the nature or geographical scope of particular subjects, nor to the focus of research nor its place of dissemination; for example, research which is focused on the subject specific to the Czech Republic might be of 'world leading' standard, on the contrary, work with an international focus might not be of 'world leading, internationally excellent or internationally recognized' standard.

Quality of Outputs by Journals Ranking: number of outputs in top decile (1*) and quartiles (1-4) by AIS of journals; n. a. - outputs in journals without AIS; if the output is assigned to more than one field, the mean value of quartile is taken (values from 0,1 to 0,5 rounded down); orange: outputs submitted by the team to the Evaluation, blue: other outputs by the team.

Quality of Outputs by Number of Citations: number of outputs in the top decile (1*) and in quartiles (1, 2, 3+4) of the list of outputs ordered by the number of citations; n. a. - the number of outputs in the field is low and/or the number of citations is not sufficient for relevant judgement; if the output is assigned to more than one field, the mean value of quartile is taken (values from 0,1 to 0,5 rounded down); orange: outputs submitted by the team to the Evaluation, blue: other outputs by the team.

Quality of Outputs by Citation Sources: fraction of citations of all outputs in the top quartile (TOP25) or the top half (TOP50) of list of journals ordered by AIS; fraction of "not cited" outputs is added; orange: outputs submitted by the team to the Evaluation, blue: other outputs by the team.

Field Structure of Outputs: number of outputs of the team in different fields; if the output is assigned to more than one field, the field where the publication performs best (assessed by Quality of Outputs by Journals Ranking) is taken; the table shows up to 30 fields.

Evaluation of the Research and Professional Activities of the Institutes of the Czech Academy of Sciences for 2010–2014

RESULTS OF THE PHASE I. AND BIBLIOMETRIC PARAMETERS

Institute: Institute of Botany of the CAS, v. v. i.

Team: Department of Population Ecology

Head: Doc. RNDr. Zuzana Münzbergová, Ph.D.

Total number of outputs : 127 **Evaluated outputs :** 11 (0) **Outputs for bibliometry :** 104 **Large collaborations outputs:** 0

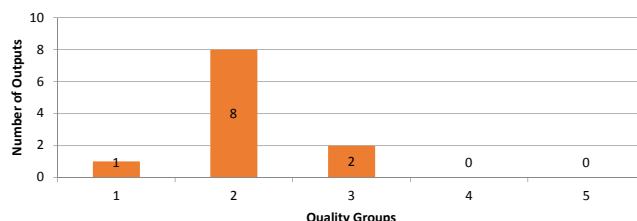
Quality Groups of Outputs (Results of the Phase I.)

Quality	1	2	3	4	5
Outputs	1	8	2	0	0

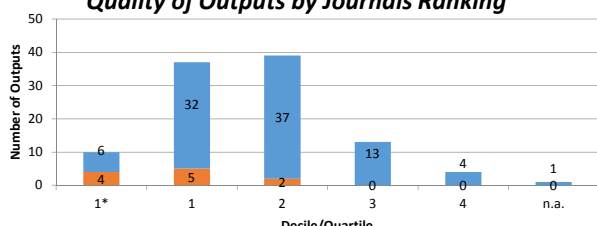
Quality Groups:

- (1): Quality that is **world-leading** in terms of originality, significance and rigour.
 (2): Quality that is **internationally excellent** in terms of originality, significance and rigour but which falls short of the highest standards of excellence.
 (3): Quality that is **recognized internationally** in terms of originality, significance and rigour.
 (4): Quality that is **recognized nationally** in terms of originality, significance and rigour.
 (5): Quality that falls **below the standard** of nationally recognized work. Or work which does not meet the published definition of research for the purposes of this assessment.

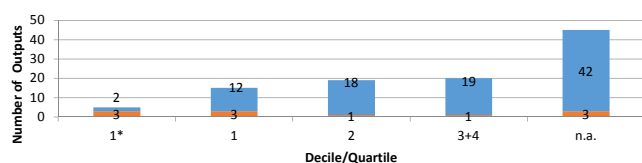
Quality Profile



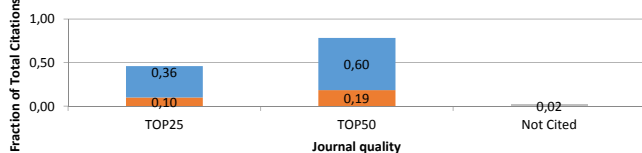
Quality of Outputs by Journals Ranking



Quality of Outputs by Number of Citations



Quality of Outputs by Citation Sources



Field Structure of Outputs

Field Structure of Outputs	Outputs
PLANT SCIENCES	34
ECOLOGY	28
MULTIDISCIPLINARY SCIENCES	14
FORESTRY	7
BIODIVERSITY CONSERVATION	6
SOIL SCIENCE	2
ENVIRONMENTAL SCIENCES	2
CHEMISTRY, MEDICINAL	2
BIOLOGY	1
MYCOLOGY	1
AGRONOMY	1
GEOSCIENCES, MULTIDISCIPLINARY	1
PHARMACOLOGY & PHARMACY	1
ENTOMOLOGY	1
EVOLUTIONARY BIOLOGY	1
INTEGRATIVE & COMPLEMENTARY MEDICINE	1
BIOCHEMISTRY & MOLECULAR BIOLOGY	1

Total number of outputs: selected types of outputs published in 2010-2014 and registered in the institutional research information system: journal article, monograph, monograph chapter, proceedings paper, patent, utility model, industrial design, prototype, functional specimen, norms and directives, specialized map, realized certified methodology, software, pilot plant, verified technology, plant breed/variety.

Evaluated outputs: outputs submitted by the team and evaluated in the Phase I (value in the brackets shows number of outputs submitted by the team but not evaluated in the Phase I).

Outputs for bibliometry: publications in 2010-2014 with less than 30 authors registered in the Web of Science; document type: article, review or proceedings paper.

Large collaborations outputs: publications in 2010-2014 with more than 30 authors registered in the Web of Science; document type: article, review or proceedings paper.

Quality Profile: number of evaluated outputs vs quality groups (5 groups); 'world-leading' quality denotes an absolute standard of quality in each field and subfield; 'world leading', 'internationally' and 'nationally' in this context refer to quality standards; they do not refer to the nature or geographical scope of particular subjects, nor to the focus of research nor its place of dissemination; for example, research which is focused on the subject specific to the Czech Republic might be of 'world leading' standard, on the contrary, work with an international focus might not be of 'world leading, internationally excellent or internationally recognized' standard.

Quality of Outputs by Journals Ranking: number of outputs in top decile (1*) and quartiles (1-4) by AIS of journals; n. a. - outputs in journals without AIS; if the output is assigned to more than one field, the mean value of quartile is taken (values from 0,1 to 0,5 rounded down); orange: outputs submitted by the team to the Evaluation, blue: other outputs by the team.

Quality of Outputs by Number of Citations: number of outputs in the top decile (1*) and in quartiles (1, 2, 3+4) of the list of outputs ordered by the number of citations; n. a. - the number of outputs in the field is low and/or the number of citations is not sufficient for relevant judgement; if the output is assigned to more than one field, the mean value of quartile is taken (values from 0,1 to 0,5 rounded down); orange: outputs submitted by the team to the Evaluation, blue: other outputs by the team.

Quality of Outputs by Citation Sources: fraction of citations of all outputs in the top quartile (TOP25) or the top half (TOP50) of list of journals ordered by AIS; fraction of "not cited" outputs is added; orange: outputs submitted by the team to the Evaluation, blue: other outputs by the team.

Field Structure of Outputs: number of outputs of the team in different fields; if the output is assigned to more than one field, the field where the publication performs best (assessed by Quality of Outputs by Journals Ranking) is taken; the table shows up to 30 fields.

Evaluation of the Research and Professional Activities of the Institutes of the Czech Academy of Sciences for 2010–2014

RESULTS OF THE PHASE I. AND BIBLIOMETRIC PARAMETERS

Institute: Institute of Botany of the CAS, v. v. i.

Team: Department of Genetic Ecology

Head: Doc. Mgr. Bohumil Mandák, Ph.D.

Total number of outputs : 91 **Evaluated outputs :** 10 (0) **Outputs for bibliometry :** 53 **Large collaborations outputs:** 0

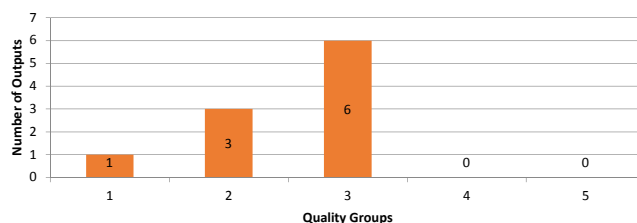
Quality Groups of Outputs (Results of the Phase I.)

Quality	1	2	3	4	5
Outputs	1	3	6	0	0

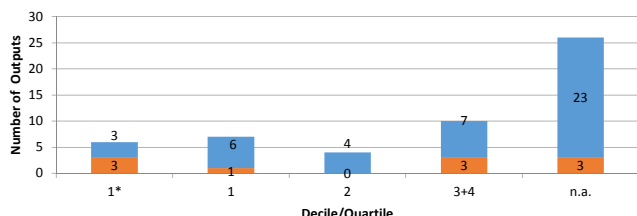
Quality Groups:

- (1): Quality that is **world-leading** in terms of originality, significance and rigour.
 (2): Quality that is **internationally excellent** in terms of originality, significance and rigour but which falls short of the highest standards of excellence.
 (3): Quality that is **recognized internationally** in terms of originality, significance and rigour.
 (4): Quality that is **recognized nationally** in terms of originality, significance and rigour.
 (5): Quality that falls **below the standard** of nationally recognized work. Or work which does not meet the published definition of research for the purposes of this assessment.

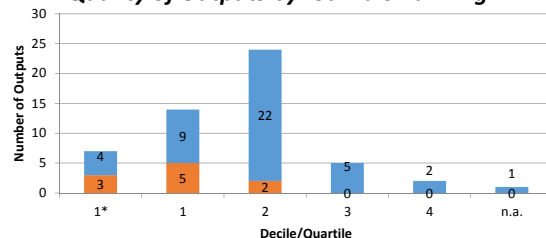
Quality Profile



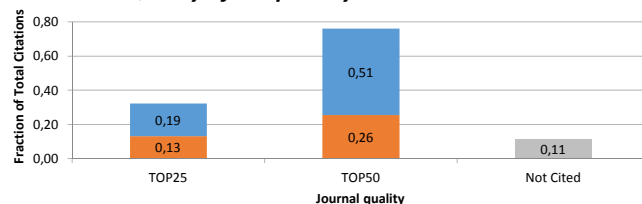
Quality of Outputs by Number of Citations



Quality of Outputs by Journals Ranking



Quality of Outputs by Citation Sources



Field Structure of Outputs

Field Structure of Outputs	Outputs
PLANT SCIENCES	35
ECOLOGY	5
MULTIDISCIPLINARY SCIENCES	4
BIOCHEMISTRY & MOLECULAR BIOLOGY	3
FORESTRY	1
EVOLUTIONARY BIOLOGY	1
PALEONTOLOGY	1
GEOGRAPHY, PHYSICAL	1
MARINE & FRESHWATER BIOLOGY	1
GENETICS & HEREDITY	1

Total number of outputs: selected types of outputs published in 2010-2014 and registered in the institutional research information system: journal article, monograph, monograph chapter, proceedings paper, patent, utility model, industrial design, prototype, functional specimen, norms and directives, specialized map, realized certified methodology, software, pilot plant, verified technology, plant breed/variety.

Evaluated outputs: outputs submitted by the team and evaluated in the Phase I (value in the brackets shows number of outputs submitted by the team but not evaluated in the Phase I).

Outputs for bibliometry: publications in 2010-2014 with less than 30 authors registered in the Web of Science; document type: article, review or proceedings paper.

Large collaborations outputs: publications in 2010-2014 with more than 30 authors registered in the Web of Science; document type: article, review or proceedings paper.

Quality Profile: number of evaluated outputs vs quality groups (5 groups); 'world-leading' quality denotes an absolute standard of quality in each field and subfield; 'world leading', 'internationally' and 'nationally' in this context refer to quality standards; they do not refer to the nature or geographical scope of particular subjects, nor to the focus of research nor its place of dissemination; for example, research which is focused on the subject specific to the Czech Republic might be of 'world leading' standard, on the contrary, work with an international focus might not be of 'world leading, internationally excellent or internationally recognized' standard.

Quality of Outputs by Journals Ranking: number of outputs in top decile (1*) and quartiles (1-4) by AIS of journals; n. a. - outputs in journals without AIS; if the output is assigned to more than one field, the mean value of quartile is taken (values from 0,1 to 0,5 rounded down); orange: outputs submitted by the team to the Evaluation, blue: other outputs by the team.

Quality of Outputs by Number of Citations: number of outputs in the top decile (1*) and in quartiles (1, 2, 3+4) of the list of outputs ordered by the number of citations; n. a. - the number of outputs in the field is low and/or the number of citations is not sufficient for relevant judgement; if the output is assigned to more than one field, the mean value of quartile is taken (values from 0,1 to 0,5 rounded down); orange: outputs submitted by the team to the Evaluation, blue: other outputs by the team.

Quality of Outputs by Citation Sources: fraction of citations of all outputs in the top quartile (TOP25) or the top half (TOP50) of list of journals ordered by AIS; fraction of "not cited" outputs is added; orange: outputs submitted by the team to the Evaluation, blue: other outputs by the team.

Field Structure of Outputs: number of outputs of the team in different fields; if the output is assigned to more than one field, the field where the publication performs best (assessed by Quality of Outputs by Journals Ranking) is taken; the table shows up to 30 fields.

Evaluation of the Research and Professional Activities of the Institutes of the Czech Academy of Sciences for 2010–2014
RESULTS OF THE PHASE I. AND BIBLIOMETRIC PARAMETERS

Institute: Institute of Botany of the CAS, v. v. i.

Team: Department of Mycorrhizal Symbioses

Head: Mgr. Martina Janoušková, Ph.D.

Total number of outputs : 72 **Evaluated outputs :** 14 (0) **Outputs for bibliometry :** 57 **Large collaborations outputs:** 1

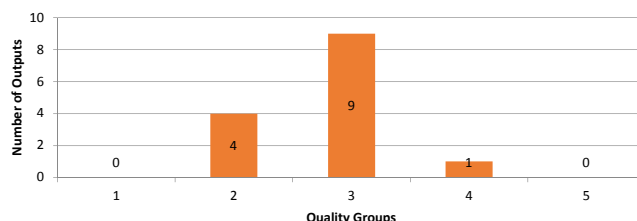
Quality Groups of Outputs (Results of the Phase I.)

Quality	1	2	3	4	5
Outputs	0	4	9	1	0

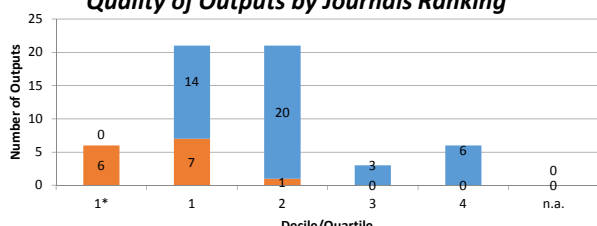
Quality Groups:

- (1): Quality that is **world-leading** in terms of originality, significance and rigour.
 (2): Quality that is **internationally excellent** in terms of originality, significance and rigour but which falls short of the highest standards of excellence.
 (3): Quality that is **recognized internationally** in terms of originality, significance and rigour.
 (4): Quality that is **recognized nationally** in terms of originality, significance and rigour.
 (5): Quality that falls **below the standard** of nationally recognized work. Or work which does not meet the published definition of research for the purposes of this assessment.

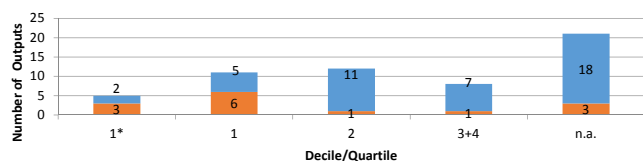
Quality Profile



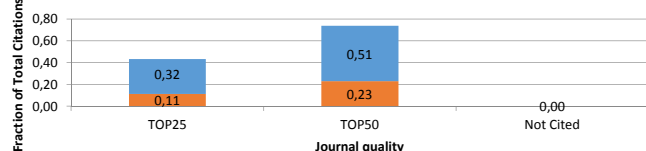
Quality of Outputs by Journals Ranking



Quality of Outputs by Number of Citations



Quality of Outputs by Citation Sources



Field Structure of Outputs

Field Structure of Outputs	Outputs
PLANT SCIENCES	15
MYCOLOGY	8
AGRONOMY	8
SOIL SCIENCE	4
MULTIDISCIPLINARY SCIENCES	4
MICROBIOLOGY	4
BIOLOGY	2
BIOCHEMISTRY & MOLECULAR BIOLOGY	2
BIOTECHNOLOGY & APPLIED MICROBIOLOGY	2
MARINE & FRESHWATER BIOLOGY	2
ENVIRONMENTAL SCIENCES	2
BIODIVERSITY CONSERVATION	1
BIOCHEMICAL RESEARCH METHODS	1
WATER RESOURCES	1
HORTICULTURE	1

Total number of outputs: selected types of outputs published in 2010-2014 and registered in the institutional research information system: journal article, monograph, monograph chapter, proceedings paper, patent, utility model, industrial design, prototype, functional specimen, norms and directives, specialized map, realized certified methodology, software, pilot plant, verified technology, plant breed/variety.

Evaluated outputs: outputs submitted by the team and evaluated in the Phase I (value in the brackets shows number of outputs submitted by the team but not evaluated in the Phase I).

Outputs for bibliometry: publications in 2010-2014 registered in the Web of Science; document type: article, review or proceedings paper; large collaborations outputs are also included.

Large collaborations outputs: publications in 2010-2014 with more than 30 authors registered in the Web of Science; document type: article, review or proceedings paper.

Quality Profile: number of evaluated outputs vs quality groups (5 groups); 'world-leading' quality denotes an absolute standard of quality in each field and subfield; 'world leading', 'internationally' and 'nationally' in this context refer to quality standards; they do not refer to the nature or geographical scope of particular subjects, nor to the focus of research nor its place of dissemination; for example, research which is focused on the subject specific to the Czech Republic might be of 'world leading' standard, on the contrary, work with an international focus might not be of 'world leading, internationally excellent or internationally recognized' standard.

Quality of Outputs by Journals Ranking: number of outputs in top decile (1*) and quartiles (1-4) by AIS of journals; n. a. - outputs in journals without AIS; if the output is assigned to more than one field, the mean value of quartile is taken (values from 0,1 to 0,5 rounded down); orange: outputs submitted by the team to the Evaluation, blue: other outputs by the team.

Quality of Outputs by Number of Citations: number of outputs in the top decile (1*) and in quartiles (1, 2, 3+4) of the list of outputs ordered by the number of citations; n. a. - the number of outputs in the field is low and/or the number of citations is not sufficient for relevant judgement; if the output is assigned to more than one field, the mean value of quartile is taken (values from 0,1 to 0,5 rounded down); orange: outputs submitted by the team to the Evaluation, blue: other outputs by the team.

Quality of Outputs by Citation Sources: fraction of citations of all outputs in the top quartile (TOP25) or the top half (TOP50) of list of journals ordered by AIS; fraction of "not cited" outputs is added; orange: outputs submitted by the team to the Evaluation, blue: other outputs by the team.

Field Structure of Outputs: number of outputs of the team in different fields; if the output is assigned to more than one field, the field where the publication performs best (assessed by Quality of Outputs by Journals Ranking) is taken; the table shows up to 30 fields.

Evaluation of the Research and Professional Activities of the Institutes of the Czech Academy of Sciences for 2010–2014

RESULTS OF THE PHASE I. AND BIBLIOMETRIC PARAMETERS

Institute: Institute of Botany of the CAS, v. v. i.

Team: Centre for Phycology

Head: RNDr. Tomáš Hauer, Ph.D.

Total number of outputs : 189 **Evaluated outputs :** 14 (0) **Outputs for bibliometry :** 125 **Large collaborations outputs:** 0

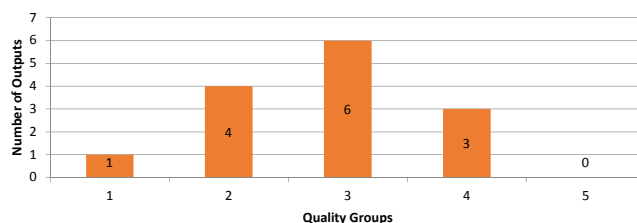
Quality Groups of Outputs (Results of the Phase I.)

Quality	1	2	3	4	5
Outputs	1	4	6	3	0

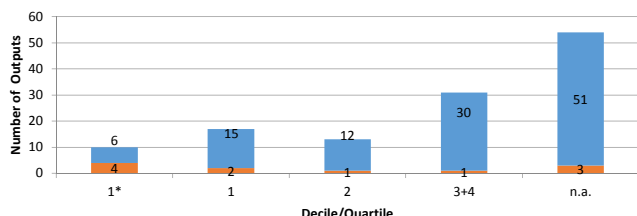
Quality Groups:

- (1): Quality that is **world-leading** in terms of originality, significance and rigour.
 (2): Quality that is **internationally excellent** in terms of originality, significance and rigour but which falls short of the highest standards of excellence.
 (3): Quality that is **recognized internationally** in terms of originality, significance and rigour.
 (4): Quality that is **recognized nationally** in terms of originality, significance and rigour.
 (5): Quality that falls **below the standard** of nationally recognized work. Or work which does not meet the published definition of research for the purposes of this assessment.

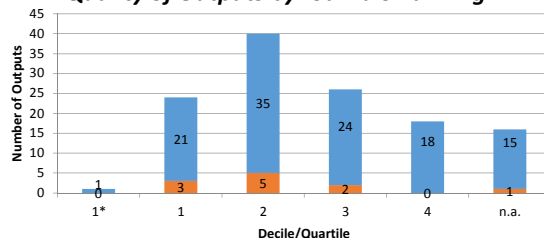
Quality Profile



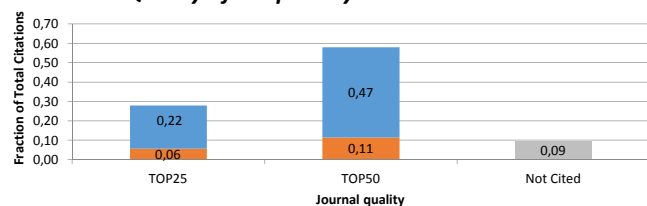
Quality of Outputs by Number of Citations



Quality of Outputs by Journals Ranking



Quality of Outputs by Citation Sources



Field Structure of Outputs

Field Structure of Outputs	Outputs
PLANT SCIENCES	48
MARINE & FRESHWATER BIOLOGY	26
BIODIVERSITY CONSERVATION	9
MICROBIOLOGY	7
BIOTECHNOLOGY & APPLIED MICROBIOLOGY	7
ECOLOGY	6
ENVIRONMENTAL SCIENCES	5
MULTIDISCIPLINARY SCIENCES	3
BIOLOGY	3
BIOCHEMISTRY & MOLECULAR BIOLOGY	3
WATER RESOURCES	2
AGRICULTURAL ENGINEERING	1
ASTRONOMY & ASTROPHYSICS	1
GENETICS & HEREDITY	1
GEOSCIENCES, MULTIDISCIPLINARY	1

Total number of outputs: selected types of outputs published in 2010-2014 and registered in the institutional research information system: journal article, monograph, monograph chapter, proceedings paper, patent, utility model, industrial design, prototype, functional specimen, norms and directives, specialized map, realized certified methodology, software, pilot plant, verified technology, plant breed/variety.

Evaluated outputs: outputs submitted by the team and evaluated in the Phase I (value in the brackets shows number of outputs submitted by the team but not evaluated in the Phase I).

Outputs for bibliometry: publications in 2010-2014 with less than 30 authors registered in the Web of Science; document type: article, review or proceedings paper.

Large collaborations outputs: publications in 2010-2014 with more than 30 authors registered in the Web of Science; document type: article, review or proceedings paper.

Quality Profile: number of evaluated outputs vs quality groups (5 groups); 'world-leading' quality denotes an absolute standard of quality in each field and subfield; 'world leading', 'internationally' and 'nationally' in this context refer to quality standards; they do not refer to the nature or geographical scope of particular subjects, nor to the focus of research nor its place of dissemination; for example, research which is focused on the subject specific to the Czech Republic might be of 'world leading' standard, on the contrary, work with an international focus might not be of 'world leading, internationally excellent or internationally recognized' standard.

Quality of Outputs by Journals Ranking: number of outputs in top decile (1*) and quartiles (1-4) by AIS of journals; n. a. - outputs in journals without AIS; if the output is assigned to more than one field, the mean value of quartile is taken (values from 0,1 to 0,5 rounded down); orange: outputs submitted by the team to the Evaluation, blue: other outputs by the team.

Quality of Outputs by Number of Citations: number of outputs in the top decile (1*) and in quartiles (1, 2, 3+4) of the list of outputs ordered by the number of citations; n. a. - the number of outputs in the field is low and/or the number of citations is not sufficient for relevant judgement; if the output is assigned to more than one field, the mean value of quartile is taken (values from 0,1 to 0,5 rounded down); orange: outputs submitted by the team to the Evaluation, blue: other outputs by the team.

Quality of Outputs by Citation Sources: fraction of citations of all outputs in the top quartile (TOP25) or the top half (TOP50) of list of journals ordered by AIS; fraction of "not cited" outputs is added; orange: outputs submitted by the team to the Evaluation, blue: other outputs by the team.

Field Structure of Outputs: number of outputs of the team in different fields; if the output is assigned to more than one field, the field where the publication performs best (assessed by Quality of Outputs by Journals Ranking) is taken; the table shows up to 30 fields.

Evaluation of the Research and Professional Activities of the Institutes of the Czech Academy of Sciences for 2010–2014

RESULTS OF THE PHASE I. AND BIBLIOMETRIC PARAMETERS

Institute: Institute of Botany of the CAS, v. v. i.

Team: Department of Functional Ecology

Head: Doc. Mgr. Jiří Doležal, Ph.D.

Total number of outputs : 292 **Evaluated outputs :** 19 (0) **Outputs for bibliometry :** 198 **Large collaborations outputs:** 1

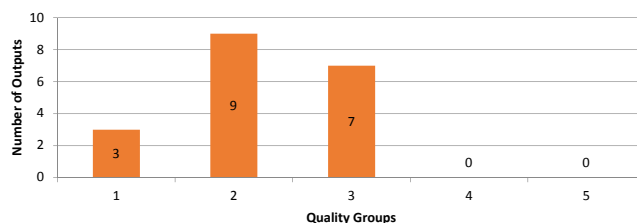
Quality Groups of Outputs (Results of the Phase I.)

Quality	1	2	3	4	5
Outputs	3	9	7	0	0

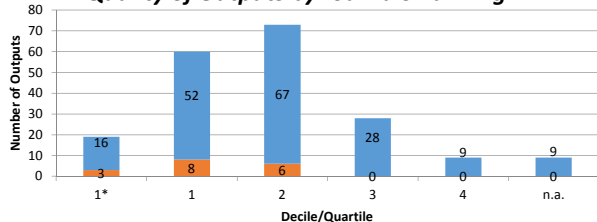
Quality Groups:

- (1): Quality that is **world-leading** in terms of originality, significance and rigour.
 (2): Quality that is **internationally excellent** in terms of originality, significance and rigour but which falls short of the highest standards of excellence.
 (3): Quality that is **recognized internationally** in terms of originality, significance and rigour.
 (4): Quality that is **recognized nationally** in terms of originality, significance and rigour.
 (5): Quality that falls **below the standard** of nationally recognized work. Or work which does not meet the published definition of research for the purposes of this assessment.

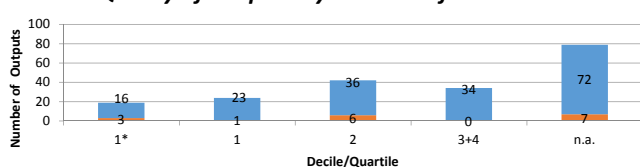
Quality Profile



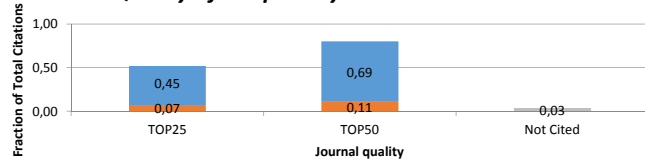
Quality of Outputs by Journals Ranking



Quality of Outputs by Number of Citations



Quality of Outputs by Citation Sources



Field Structure of Outputs

Field Structure of Outputs	Outputs
PLANT SCIENCES	60
ECOLOGY	39
FORESTRY	30
MARINE & FRESHWATER BIOLOGY	11
MULTIDISCIPLINARY SCIENCES	9
ENVIRONMENTAL SCIENCES	7
BIODIVERSITY CONSERVATION	6
LIMNOLOGY	5
BIOLOGY	5
MICROBIOLOGY	4
SOIL SCIENCE	4
AGRICULTURE, MULTIDISCIPLINARY	4
ENGINEERING, ENVIRONMENTAL	3
AGRONOMY	2
GEOSCIENCES, MULTIDISCIPLINARY	2
BIOCHEMISTRY & MOLECULAR BIOLOGY	2
PALEONTOLOGY	1
CELL BIOLOGY	1
ZOOLOGY	1
ENVIRONMENTAL STUDIES	1
EVOLUTIONARY BIOLOGY	1

Total number of outputs: selected types of outputs published in 2010-2014 and registered in the institutional research information system: journal article, monograph, monograph chapter, proceedings paper, patent, utility model, industrial design, prototype, functional specimen, norms and directives, specialized map, realized certified methodology, software, pilot plant, verified technology, plant breed/variety.

Evaluated outputs: outputs submitted by the team and evaluated in the Phase I (value in the brackets shows number of outputs submitted by the team but not evaluated in the Phase I).

Outputs for bibliometry: publications in 2010-2014 registered in the Web of Science; document type: article, review or proceedings paper; large collaborations outputs are also included.

Large collaborations outputs: publications in 2010-2014 with more than 30 authors registered in the Web of Science; document type: article, review or proceedings paper.

Quality Profile: number of evaluated outputs vs quality groups (5 groups); 'world-leading' quality denotes an absolute standard of quality in each field and subfield; 'world leading', 'internationally' and 'nationally' in this context refer to quality standards; they do not refer to the nature or geographical scope of particular subjects, nor to the focus of research nor its place of dissemination; for example, research which is focused on the subject specific to the Czech Republic might be of 'world leading' standard, on the contrary, work with an international focus might not be of 'world leading, internationally excellent or internationally recognized' standard.

Quality of Outputs by Journals Ranking: number of outputs in top decile (1*) and quartiles (1-4) by AIS of journals; n. a. - outputs in journals without AIS; if the output is assigned to more than one field, the mean value of quartile is taken (values from 0,1 to 0,5 rounded down); orange: outputs submitted by the team to the Evaluation, blue: other outputs by the team.

Quality of Outputs by Number of Citations: number of outputs in the top decile (1*) and in quartiles (1, 2, 3+4) of the list of outputs ordered by the number of citations; n. a. - the number of outputs in the field is low and/or the number of citations is not sufficient for relevant judgement; if the output is assigned to more than one field, the mean value of quartile is taken (values from 0,1 to 0,5 rounded down); orange: outputs submitted by the team to the Evaluation, blue: other outputs by the team.

Quality of Outputs by Citation Sources: fraction of citations of all outputs in the top quartile (TOP25) or the top half (TOP50) of list of journals ordered by AIS; fraction of "not cited" outputs is added; orange: outputs submitted by the team to the Evaluation, blue: other outputs by the team.

Field Structure of Outputs: number of outputs of the team in different fields; if the output is assigned to more than one field, the field where the publication performs best (assessed by Quality of Outputs by Journals Ranking) is taken; the table shows up to 30 fields.

Evaluation of the Research and Professional Activities of the Institutes of the Czech Academy of Sciences for 2010–2014

RESULTS OF THE PHASE I. AND BIBLIOMETRIC PARAMETERS

Institute: Institute of Botany of the CAS, v. v. i.

Team: Department of Vegetation Ecology

Head: Mgr. Radim Hédľ, Ph.D.

Total number of outputs : 251 **Evaluated outputs :** 16 (0) **Outputs for bibliometry :** 126 **Large collaborations outputs:** 2

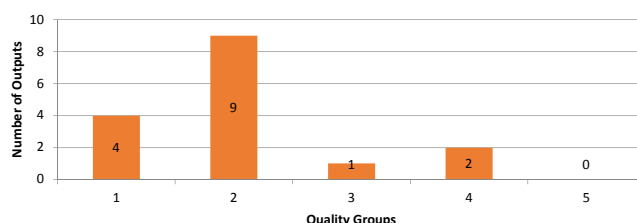
Quality Groups of Outputs (Results of the Phase I.)

Quality	1	2	3	4	5
Outputs	4	9	1	2	0

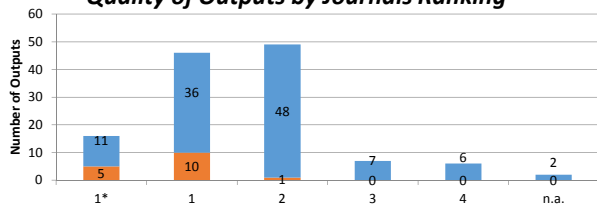
Quality Groups:

- (1): Quality that is **world-leading** in terms of originality, significance and rigour.
 (2): Quality that is **internationally excellent** in terms of originality, significance and rigour but which falls short of the highest standards of excellence.
 (3): Quality that is **recognized internationally** in terms of originality, significance and rigour.
 (4): Quality that is **recognized nationally** in terms of originality, significance and rigour.
 (5): Quality that falls **below the standard** of nationally recognized work. Or work which does not meet the published definition of research for the purposes of this assessment.

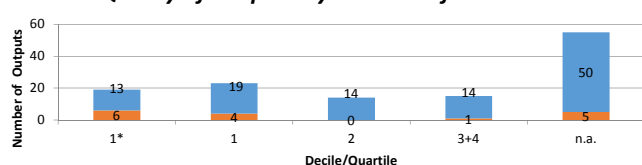
Quality Profile



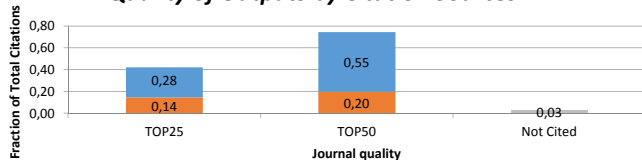
Quality of Outputs by Journals Ranking



Quality of Outputs by Number of Citations



Quality of Outputs by Citation Sources



Field Structure of Outputs

Field Structure of Outputs	Outputs
PLANT SCIENCES	32
FORESTRY	29
GEOGRAPHY, PHYSICAL	11
ECOLOGY	10
MULTIDISCIPLINARY SCIENCES	7
PALEONTOLOGY	6
MARINE & FRESHWATER BIOLOGY	5
ENVIRONMENTAL SCIENCES	5
BIODIVERSITY CONSERVATION	4
EVOLUTIONARY BIOLOGY	2
BIOLOGY	2
AGRONOMY	2
LIMNOLOGY	1
MICROBIOLOGY	1
AGRICULTURE, MULTIDISCIPLINARY	1
GEOSCIENCES, MULTIDISCIPLINARY	1
ENGINEERING, GEOLOGICAL	1
HISTORY OF SOCIAL SCIENCES	1
ANTHROPOLOGY	1
REMOTE SENSING	1
WATER RESOURCES	1
GENETICS & HEREDITY	1
GEOGRAPHY	1

Total number of outputs: selected types of outputs published in 2010-2014 and registered in the institutional research information system: journal article, monograph, monograph chapter, proceedings paper, patent, utility model, industrial design, prototype, functional specimen, norms and directives, specialized map, realized certified methodology, software, pilot plant, verified technology, plant breed/variety.

Evaluated outputs: outputs submitted by the team and evaluated in the Phase I (value in the brackets shows number of outputs submitted by the team but not evaluated in the Phase I).

Outputs for bibliometry: publications in 2010-2014 registered in the Web of Science; document type: article, review or proceedings paper; large collaborations outputs are also included.

Large collaborations outputs: publications in 2010-2014 with more than 30 authors registered in the Web of Science; document type: article, review or proceedings paper.

Quality Profile: number of evaluated outputs vs quality groups (5 groups); 'world-leading' quality denotes an absolute standard of quality in each field and subfield; 'world leading', 'internationally' and 'nationally' in this context refer to quality standards; they do not refer to the nature or geographical scope of particular subjects, nor to the focus of research nor its place of dissemination; for example, research which is focused on the subject specific to the Czech Republic might be of 'world leading' standard, on the contrary, work with an international focus might not be of 'world leading, internationally excellent or internationally recognized' standard.

Quality of Outputs by Journals Ranking: number of outputs in top decile (1*) and quartiles (1-4) by AIS of journals; n. a. - outputs in journals without AIS; if the output is assigned to more than one field, the mean value of quartile is taken (values from 0,1 to 0,5 rounded down); orange: outputs submitted by the team to the Evaluation, blue: other outputs by the team.

Quality of Outputs by Number of Citations: number of outputs in the top decile (1*) and in quartiles (1, 2, 3+4) of the list of outputs ordered by the number of citations; n. a. - the number of outputs in the field is low and/or the number of citations is not sufficient for relevant judgement; if the output is assigned to more than one field, the mean value of quartile is taken (values from 0,1 to 0,5 rounded down); orange: outputs submitted by the team to the Evaluation, blue: other outputs by the team.

Quality of Outputs by Citation Sources: fraction of citations of all outputs in the top quartile (TOP25) or the top half (TOP50) of list of journals ordered by AIS; fraction of "not cited" outputs is added; orange: outputs submitted by the team to the Evaluation, blue: other outputs by the team.

Field Structure of Outputs: number of outputs of the team in different fields; if the output is assigned to more than one field, the field where the publication performs best (assessed by Quality of Outputs by Journals Ranking) is taken; the table shows up to 30 fields.

Evaluation of the Research and Professional Activities of the Institutes of the Czech Academy of Sciences for 2010–2014

RESULTS OF THE PHASE I. AND BIBLIOMETRIC PARAMETERS

Institute: Institute of Botany of the CAS, v. v. i.

Team: Department of Experimental Phycology and Ecotoxicology

Head: Prof. Ing. Blahoslav Maršálek, CSc.

Total number of outputs : 111 **Evaluated outputs :** 7 (0) **Outputs for bibliometry :** 44 **Large collaborations outputs:** 0

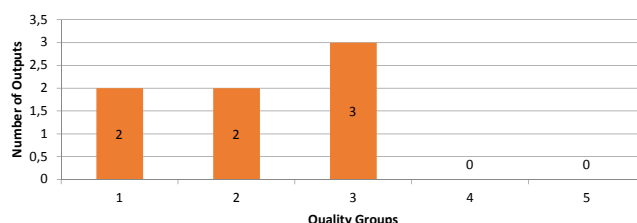
Quality Groups of Outputs (Results of the Phase I.)

Quality	1	2	3	4	5
Outputs	2	2	3	0	0

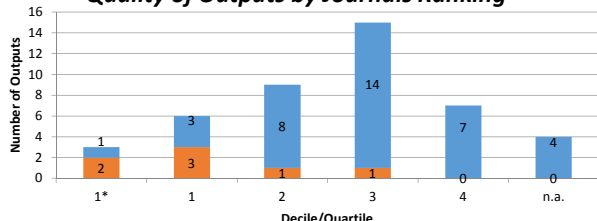
Quality Groups:

- (1): Quality that is **world-leading** in terms of originality, significance and rigour.
 (2): Quality that is **internationally excellent** in terms of originality, significance and rigour but which falls short of the highest standards of excellence.
 (3): Quality that is **recognized internationally** in terms of originality, significance and rigour.
 (4): Quality that is **recognized nationally** in terms of originality, significance and rigour.
 (5): Quality that falls **below the standard** of nationally recognized work. Or work which does not meet the published definition of research for the purposes of this assessment.

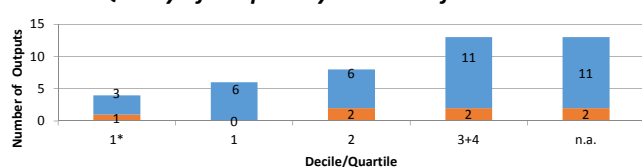
Quality Profile



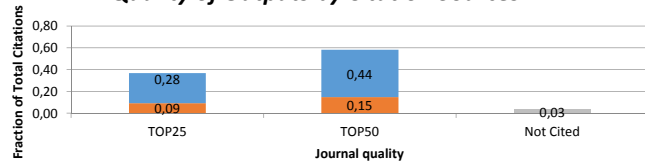
Quality of Outputs by Journals Ranking



Quality of Outputs by Number of Citations



Quality of Outputs by Citation Sources



Field Structure of Outputs

Field Structure of Outputs	Outputs
ENVIRONMENTAL SCIENCES	12
FISHERIES	5
MARINE & FRESHWATER BIOLOGY	3
ENGINEERING, ENVIRONMENTAL	3
CHEMISTRY, ANALYTICAL	2
WATER RESOURCES	2
CHEMISTRY, MULTIDISCIPLINARY	2
ECOLOGY	2
PHARMACOLOGY & PHARMACY	2
VETERINARY SCIENCES	2
AGRICULTURAL ENGINEERING	2
MICROBIOLOGY	1
ENDOCRINOLOGY & METABOLISM	1
ENGINEERING, CHEMICAL	1
BIOTECHNOLOGY & APPLIED MICROBIOLOGY	1
MECHANICS	1
BIOCHEMISTRY & MOLECULAR BIOLOGY	1
BIODIVERSITY CONSERVATION	1

Total number of outputs: selected types of outputs published in 2010-2014 and registered in the institutional research information system: journal article, monograph, monograph chapter, proceedings paper, patent, utility model, industrial design, prototype, functional specimen, norms and directives, specialized map, realized certified methodology, software, pilot plant, verified technology, plant breed/variety.

Evaluated outputs: outputs submitted by the team and evaluated in the Phase I (value in the brackets shows number of outputs submitted by the team but not evaluated in the Phase I).

Outputs for bibliometry: publications in 2010-2014 with less than 30 authors registered in the Web of Science; document type: article, review or proceedings paper.

Large collaborations outputs: publications in 2010-2014 with more than 30 authors registered in the Web of Science; document type: article, review or proceedings paper.

Quality Profile: number of evaluated outputs vs quality groups (5 groups); 'world-leading' quality denotes an absolute standard of quality in each field and subfield; 'world leading', 'internationally' and 'nationally' in this context refer to quality standards; they do not refer to the nature or geographical scope of particular subjects, nor to the focus of research nor its place of dissemination; for example, research which is focused on the subject specific to the Czech Republic might be of 'world leading' standard, on the contrary, work with an international focus might not be of 'world leading, internationally excellent or internationally recognized' standard.

Quality of Outputs by Journals Ranking: number of outputs in top decile (1*) and quartiles (1-4) by AIS of journals; n. a. - outputs in journals without AIS; if the output is assigned to more than one field, the mean value of quartile is taken (values from 0,1 to 0,5 rounded down); orange: outputs submitted by the team to the Evaluation, blue: other outputs by the team.

Quality of Outputs by Number of Citations: number of outputs in the top decile (1*) and in quartiles (1, 2, 3+4) of the list of outputs ordered by the number of citations; n. a. - the number of outputs in the field is low and/or the number of citations is not sufficient for relevant judgement; if the output is assigned to more than one field, the mean value of quartile is taken (values from 0,1 to 0,5 rounded down); orange: outputs submitted by the team to the Evaluation, blue: other outputs by the team.

Quality of Outputs by Citation Sources: fraction of citations of all outputs in the top quartile (TOP25) or the top half (TOP50) of list of journals ordered by AIS; fraction of "not cited" outputs is added; orange: outputs submitted by the team to the Evaluation, blue: other outputs by the team.

Field Structure of Outputs: number of outputs of the team in different fields; if the output is assigned to more than one field, the field where the publication performs best (assessed by Quality of Outputs by Journals Ranking) is taken; the table shows up to 30 fields.