

# Evaluation of the Research and Professional Activities of the Institutes of the Czech Academy of Sciences for 2015–2019

## BIBLIOMETRIC PARAMETERS OF ALL OUTPUTS INCLUDING THOSE EVALUATED IN THE PHASE I.

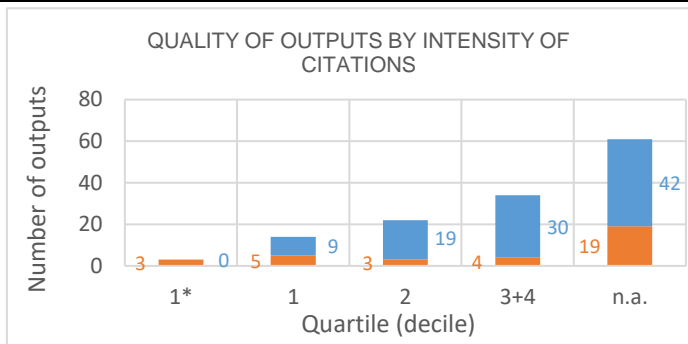
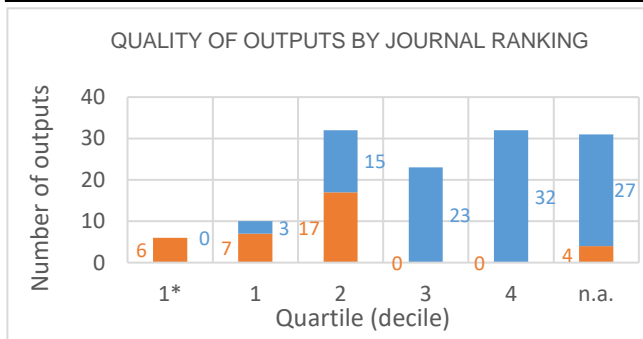
**Institute:** Institute of Animal Physiology and Genetics of the CAS, v. v. i.

**Team:** Biomedical Research Team

**Head:** Mgr. Petr Vodička, PhD.

**Field:** Medical biotechnology

**Total number of outputs:** 134      **Evaluated outputs:** 34



### TYPES OF COLLABORATION

Collaboration	Outputs (evaluated)	Outputs (not evaluated)
A1	2	4
B		18
B1	1	8
C	12	16
C1	4	9
D	7	23
D1	2	8
E		
n.a.	4	14
Without affiliation	2	
A1+B1+C1+D1	9	29
B+C+D+E	19	57

### FIELD STRUCTURE OF OUTPUTS

Field structure of outputs	Outputs (evaluated)	Outputs (not evaluated)
Neurosciences		19
n.a.	4	14
Cell Biology	9	7
Biochemistry Molecular Biology	6	8
Biochemical Research Methods	3	10
Medicine Research Experimental	5	6
Oncology		7
Clinical Neurology		6
Endocrinology Metabolism	1	5
Multidisciplinary Sciences	2	4
Genetics Heredity	3	2
Nutrition Dietetics	5	
Biotechnology Applied Microbiology	2	2
Immunology	1	3
Nanoscience Nanotechnology		4
Pharmacology Pharmacy	1	3
Reproductive Biology		4
Engineering Biomedical		3
Microbiology		3
Surgery	2	1

**Total number of outputs:** outputs of the team published during the evaluated period 2015-2019.

**Evaluated outputs:** selected outputs submitted by the team to the Phase I of evaluation.

**Outputs used for bibliometry:** subset of all outputs registered in the Web of Science; document type: article, review or proceedings paper.

**Quality of outputs by journal ranking:** number of outputs in top decile (1\*) and quartiles (1-4) by AIS of journals; n. a. - outputs in journals without AIS; orange: outputs from the Phase I, blue: the other outputs of the team.

**Quality of outputs by intensity of citations:** number of outputs in the top decile (1\*) and in quartiles (1, 2, 3+4) determined from the list of outputs ordered by the number of citations (downloaded from the Web of Science at the beginning of evaluation) for each subject category, year, and type of output; n. a. – the data are not robust enough for relevant judgement; orange: outputs from the Phase I, blue: the other outputs of the team.

**Types of collaboration:** outputs created exclusively in a particular institute are marked by A1, outputs created within national cooperation by max. 5 organizations are marked by B, outputs created within international cooperation by max. 5 organizations are marked C, outputs created within large collaboration exceeding 5 organizations are marked D, outputs created within large international collaboration are marked E. It is distinguished by marking B1/B, C1/C and D1/D whether the output has/does not have a corresponding author from a particular team.

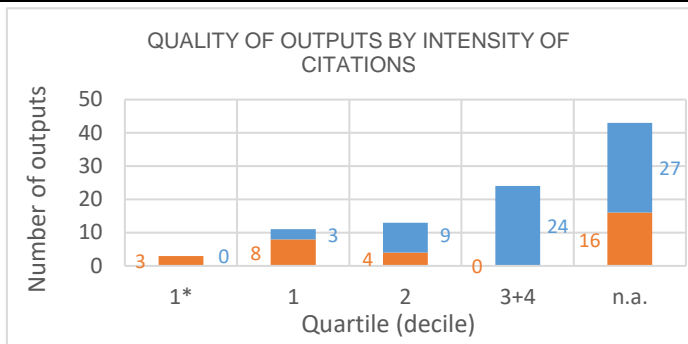
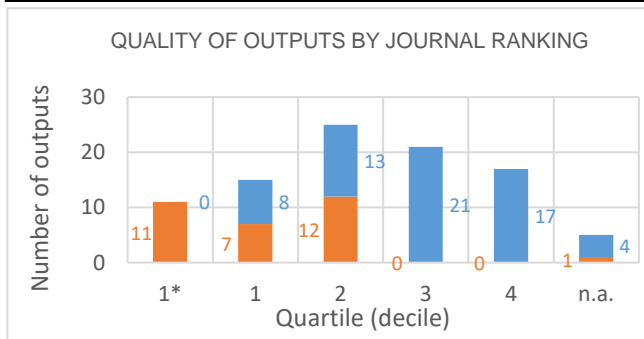
**Field structure of outputs:** number of outputs of the team in different subject categories (subfields); if the output is assigned to more than one field, the field where the publication performs best (assessed by Quality of outputs by journals ranking) is taken; the table shows up to 20 fields.

**Detailed explanation of the indicators is provided in the Methodology of evaluation, Annex 2 – Bibliometrics.**

# Evaluation of the Research and Professional Activities of the Institutes of the Czech Academy of Sciences for 2015–2019

## BIBLIOMETRIC PARAMETERS OF ALL OUTPUTS INCLUDING THOSE EVALUATED IN THE PHASE I.

**Institute:** Institute of Animal Physiology and Genetics of the CAS, v. v. i.  
**Team:** Team of Developmental Biology  
**Head:** doc. RNDr. Marcela Buchtová, PhD.  
**Field:** Biochemistry and molecular cell biology, biophysics, virology, ...  
**Total number of outputs:** 94      **Evaluated outputs:** 31



### TYPES OF COLLABORATION

Collaboration	Outputs (evaluated)	Outputs (not evaluated)
A1	1	5
B	1	6
B1	4	19
C	7	6
C1	2	15
D	10	7
D1	6	4
E		
n.a.		
Without affiliation		1
A1+B1+C1+D1	13	43
B+C+D+E	18	19

### FIELD STRUCTURE OF OUTPUTS

Field structure of outputs	Outputs (evaluated)	Outputs (not evaluated)
Cell Biology	7	16
Biochemistry Molecular Biology	10	8
Reproductive Biology		14
Developmental Biology	3	8
Multidisciplinary Sciences	4	4
Physiology		8
Veterinary Sciences		8
Endocrinology Metabolism	1	6
Agriculture Dairy Animal Science		6
Anatomy Morphology	2	3
Chemistry Multidisciplinary	3	2
Dentistry Oral Surgery Medicine	3	1
Biophysics	2	1
Biotechnology Applied Microbiology	1	2
Genetics Heredity	3	
Zoology		3
Biology	1	1
Cell Tissue Engineering		2
Engineering Biomedical	1	1
Medicine Research Experimental	1	1

**Total number of outputs:** outputs of the team published during the evaluated period 2015-2019.

**Evaluated outputs:** selected outputs submitted by the team to the Phase I of evaluation.

**Outputs used for bibliometry:** subset of all outputs registered in the Web of Science; document type: article, review or proceedings paper.

**Quality of outputs by journal ranking:** number of outputs in top decile (1\*) and quartiles (1-4) by AIS of journals; n. a. - outputs in journals without AIS; orange: outputs from the Phase I, blue: the other outputs of the team.

**Quality of outputs by intensity of citations:** number of outputs in the top decile (1\*) and in quartiles (1, 2, 3+4) determined from the list of outputs ordered by the number of citations (downloaded from the Web of Science at the beginning of evaluation) for each subject category, year, and type of output; n. a. – the data are not robust enough for relevant judgement; orange: outputs from the Phase I, blue: the other outputs of the team.

**Types of collaboration:** outputs created exclusively in a particular institute are marked by A1, outputs created within national cooperation by max. 5 organizations are marked by B, outputs created within international cooperation by max. 5 organizations are marked C, outputs created within large collaboration exceeding 5 organizations are marked D, outputs created within large international collaboration are marked E. It is distinguished by marking B1/B, C1/C and D1/D whether the output has/does not have a corresponding author from a particular team.

**Field structure of outputs:** number of outputs of the team in different subject categories (subfields); if the output is assigned to more than one field, the field where the publication performs best (assessed by Quality of outputs by journals ranking) is taken; the table shows up to 20 fields.

**Detailed explanation of the indicators is provided in the Methodology of evaluation, Annex 2 – Bibliometrics.**

# Evaluation of the Research and Professional Activities of the Institutes of the Czech Academy of Sciences for 2015–2019

## BIBLIOMETRIC PARAMETERS OF ALL OUTPUTS INCLUDING THOSE EVALUATED IN THE PHASE I.

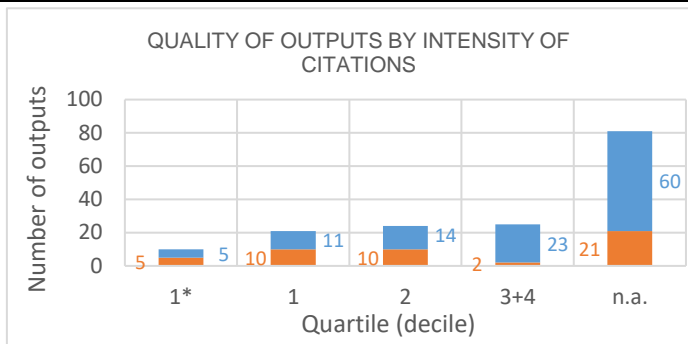
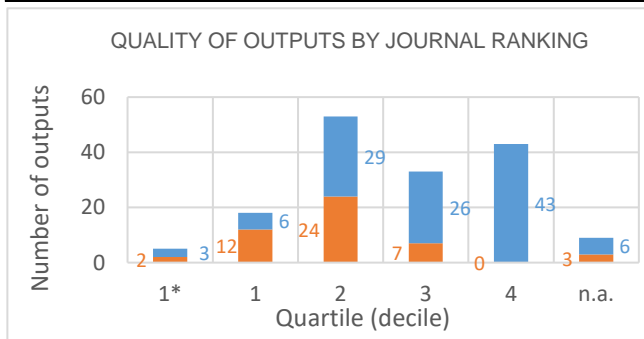
**Institute:** Institute of Animal Physiology and Genetics of the CAS, v. v. i.

**Team:** Biodiversity and Evolution Team

**Head:** prof. Ing. Petr Ráb, DrSc, dr. h. c.

**Field:** Biological sciences

**Total number of outputs:** 161      **Evaluated outputs:** 48



### TYPES OF COLLABORATION

Collaboration	Outputs (evaluated)	Outputs (not evaluated)
A1	1	2
B	6	24
B1	1	17
C	10	27
C1	8	8
D	15	25
D1	6	8
E		
n.a.	1	1
Without affiliation		1
A1+B1+C1+D1	16	35
B+C+D+E	31	76

### FIELD STRUCTURE OF OUTPUTS

Field structure of outputs	Outputs (evaluated)	Outputs (not evaluated)
Genetics Heredity	19	23
Evolutionary Biology	21	10
Ecology	13	12
Biochemistry Molecular Biology	14	10
Microbiology	2	21
Zoology	3	15
Multidisciplinary Sciences	8	9
Cell Biology	1	7
Biotechnology Applied Microbiology	2	5
Agriculture Dairy Animal Science	1	5
Chemistry Multidisciplinary	2	4
Marine Freshwater Biology		6
Biology	3	1
Biodiversity Conservation		3
Endocrinology Metabolism	1	2
Geography Physical	2	1
Limnology		3
Veterinary Sciences		3
Developmental Biology	2	
Entomology		2

**Total number of outputs:** outputs of the team published during the evaluated period 2015-2019.

**Evaluated outputs:** selected outputs submitted by the team to the Phase I of evaluation.

**Outputs used for bibliometry:** subset of all outputs registered in the Web of Science; document type: article, review or proceedings paper.

**Quality of outputs by journal ranking:** number of outputs in top decile (1\*) and quartiles (1-4) by AIS of journals; n. a. - outputs in journals without AIS; orange: outputs from the Phase I, blue: the other outputs of the team.

**Quality of outputs by intensity of citations:** number of outputs in the top decile (1\*) and in quartiles (1, 2, 3+4) determined from the list of outputs ordered by the number of citations (downloaded from the Web of Science at the beginning of evaluation) for each subject category, year, and type of output; n. a. – the data are not robust enough for relevant judgement; orange: outputs from the Phase I, blue: the other outputs of the team.

**Types of collaboration:** outputs created exclusively in a particular institute are marked by A1, outputs created within national cooperation by max. 5 organizations are marked by B, outputs created within international cooperation by max. 5 organizations are marked C, outputs created within large collaboration exceeding 5 organizations are marked D, outputs created within large international collaboration are marked E. It is distinguished by marking B1/B, C1/C and D1/D whether the output has/does not have a corresponding author from a particular team.

**Field structure of outputs:** number of outputs of the team in different subject categories (subfields); if the output is assigned to more than one field, the field where the publication performs best (assessed by Quality of outputs by journals ranking) is taken; the table shows up to 20 fields.

**Detailed explanation of the indicators is provided in the Methodology of evaluation, Annex 2 – Bibliometrics.**