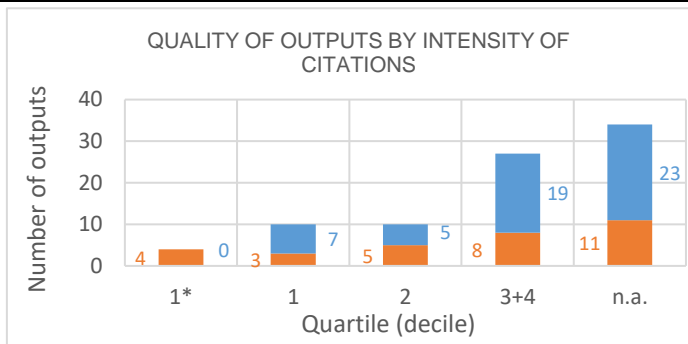
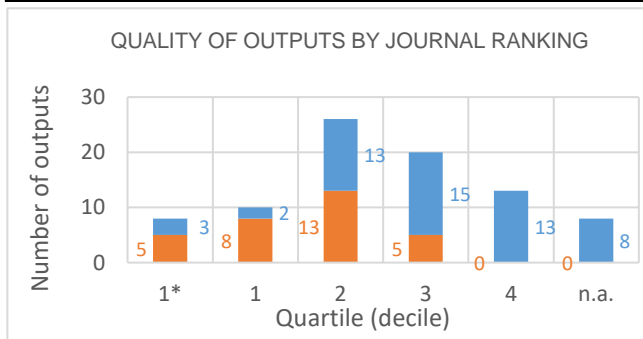


# Evaluation of the Research and Professional Activities of the Institutes of the Czech Academy of Sciences for 2015–2019

## BIBLIOMETRIC PARAMETERS OF ALL OUTPUTS INCLUDING THOSE EVALUATED IN THE PHASE I.

**Institute:** Institute of Geophysics of the CAS, v. v. i.  
**Team:** Seismology Team  
**Head:** Dr. Jan Sileny  
**Field:** Earth and related environmental sciences  
**Total number of outputs:** 85      **Evaluated outputs:** 31



### TYPES OF COLLABORATION

Collaboration	Outputs (evaluated)	Outputs (not evaluated)
A1	10	13
B	1	5
B1	4	6
C	5	15
C1	10	7
D	1	2
D1		
E		
n.a.		4
Without affiliation		2
A1+B1+C1+D1	24	26
B+C+D+E	7	22

### FIELD STRUCTURE OF OUTPUTS

Field structure of outputs	Outputs (evaluated)	Outputs (not evaluated)
Geochemistry Geophysics	25	34
Geosciences Multidisciplinary	6	8
Astronomy Astrophysics		5
n.a.		4
Engineering Geological	1	1
Meteorology Atmospheric Sciences	1	1
Mining Mineral Processing		2
Computer Science Interdisciplinary A	1	
Geology		1
History Philosophy Of Science		1
Multidisciplinary Sciences		1
Oceanography		1
Paleontology		1
Physics Multidisciplinary		1
Water Resources	1	

**Total number of outputs:** outputs of the team published during the evaluated period 2015-2019.

**Evaluated outputs:** selected outputs submitted by the team to the Phase I of evaluation.

**Outputs used for bibliometry:** subset of all outputs registered in the Web of Science; document type: article, review or proceedings paper.

**Quality of outputs by journal ranking:** number of outputs in top decile (1\*) and quartiles (1-4) by AIS of journals; n. a. - outputs in journals without AIS; orange: outputs from the Phase I, blue: the other outputs of the team.

**Quality of outputs by intensity of citations:** number of outputs in the top decile (1\*) and in quartiles (1, 2, 3+4) determined from the list of outputs ordered by the number of citations (downloaded from the Web of Science at the beginning of evaluation) for each subject category, year, and type of output; n. a. – the data are not robust enough for relevant judgement; orange: outputs from the Phase I, blue: the other outputs of the team.

**Types of collaboration:** outputs created exclusively in a particular institute are marked by A1, outputs created within national cooperation by max. 5 organizations are marked by B, outputs created within international cooperation by max. 5 organizations are marked C, outputs created within large collaboration exceeding 5 organizations are marked D, outputs created within large international collaboration are marked E. It is distinguished by marking B1/B, C1/C and D1/D whether the output has/does not have a corresponding author from a particular team.

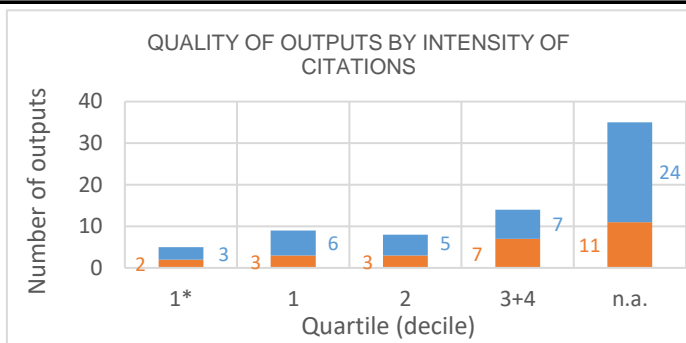
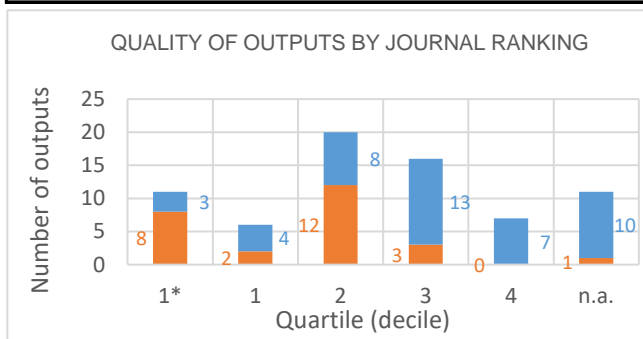
**Field structure of outputs:** number of outputs of the team in different subject categories (subfields); if the output is assigned to more than one field, the field where the publication performs best (assessed by Quality of outputs by journals ranking) is taken; the table shows up to 20 fields.

**Detailed explanation of the indicators is provided in the Methodology of evaluation, Annex 2 – Bibliometrics.**

# Evaluation of the Research and Professional Activities of the Institutes of the Czech Academy of Sciences for 2015–2019

## BIBLIOMETRIC PARAMETERS OF ALL OUTPUTS INCLUDING THOSE EVALUATED IN THE PHASE I.

**Institute:** Institute of Geophysics of the CAS, v. v. i.  
**Team:** Geodynamic Processes Team  
**Head:** David Uličný  
**Field:** Earth and related environmental sciences  
**Total number of outputs:** 71      **Evaluated outputs:** 26



### TYPES OF COLLABORATION

Collaboration	Outputs (evaluated)	Outputs (not evaluated)
A1	4	2
B	2	4
B1		4
C	2	22
C1	11	3
D	1	8
D1	5	
E		
n.a.	1	2
Without affiliation		
A1+B1+C1+D1	20	9
B+C+D+E	5	34

### FIELD STRUCTURE OF OUTPUTS

Field structure of outputs	Outputs (evaluated)	Outputs (not evaluated)
Geosciences Multidisciplinary	13	15
Geochemistry Geophysics	10	13
Geography Physical	2	6
Geology	3	5
Paleontology	3	3
Mineralogy	1	3
n.a.	1	2
Astronomy Astrophysics		2
Energy Fuels		2
Geography		2
Oceanography	2	
Agricultural Engineering		1
Engineering Environmental		1
Environmental Sciences		1
Green Sustainable Science Technolo		1
Meteorology Atmospheric Sciences	1	
Plant Sciences		1

**Total number of outputs:** outputs of the team published during the evaluated period 2015-2019.

**Evaluated outputs:** selected outputs submitted by the team to the Phase I of evaluation.

**Outputs used for bibliometry:** subset of all outputs registered in the Web of Science; document type: article, review or proceedings paper.

**Quality of outputs by journal ranking:** number of outputs in top decile (1\*) and quartiles (1-4) by AIS of journals; n. a. - outputs in journals without AIS; orange: outputs from the Phase I, blue: the other outputs of the team.

**Quality of outputs by intensity of citations:** number of outputs in the top decile (1\*) and in quartiles (1, 2, 3+4) determined from the list of outputs ordered by the number of citations (downloaded from the Web of Science at the beginning of evaluation) for each subject category, year, and type of output; n. a. – the data are not robust enough for relevant judgement; orange: outputs from the Phase I, blue: the other outputs of the team.

**Types of collaboration:** outputs created exclusively in a particular institute are marked by A1, outputs created within national cooperation by max. 5 organizations are marked by B, outputs created within international cooperation by max. 5 organizations are marked C, outputs created within large collaboration exceeding 5 organizations are marked D, outputs created within large international collaboration are marked E. It is distinguished by marking B1/B, C1/C and D1/D whether the output has/does not have a corresponding author from a particular team.

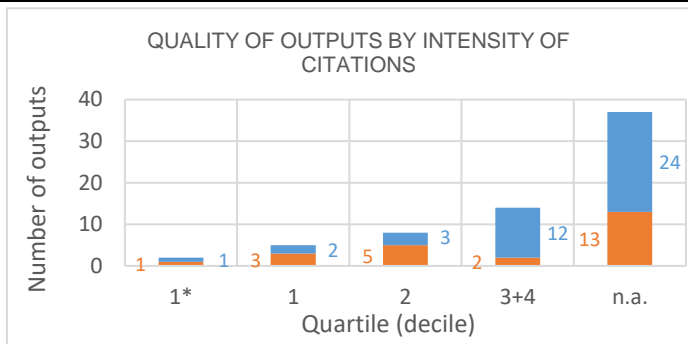
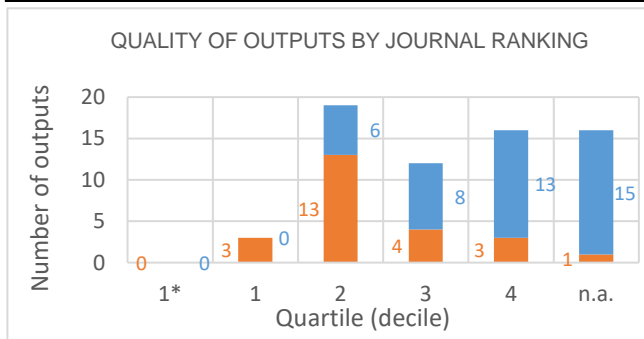
**Field structure of outputs:** number of outputs of the team in different subject categories (subfields); if the output is assigned to more than one field, the field where the publication performs best (assessed by Quality of outputs by journals ranking) is taken; the table shows up to 20 fields.

**Detailed explanation of the indicators is provided in the Methodology of evaluation, Annex 2 – Bibliometrics.**

# Evaluation of the Research and Professional Activities of the Institutes of the Czech Academy of Sciences for 2015–2019

## BIBLIOMETRIC PARAMETERS OF ALL OUTPUTS INCLUDING THOSE EVALUATED IN THE PHASE I.

**Institute:** Institute of Geophysics of the CAS, v. v. i.  
**Team:** Geomagnetism Team  
**Head:** Dr. Eduard Petrovsky  
**Field:** Earth and related environmental sciences  
**Total number of outputs:** 66      **Evaluated outputs:** 24



### TYPES OF COLLABORATION

Collaboration	Outputs (evaluated)	Outputs (not evaluated)
A1	6	5
B	1	15
B1	2	3
C	6	9
C1	5	2
D	2	3
D1	1	1
E		
n.a.	1	4
Without affiliation		
A1+B1+C1+D1	14	11
B+C+D+E	9	27

### FIELD STRUCTURE OF OUTPUTS

Field structure of outputs	Outputs (evaluated)	Outputs (not evaluated)
Geochemistry Geophysics	13	11
Geosciences Multidisciplinary	5	8
Environmental Sciences	3	5
Water Resources	2	5
Meteorology Atmospheric Sciences	3	3
n.a.	1	4
Biophysics	1	2
Engineering Electrical Electronic		3
Geography Physical	1	2
Soil Science	2	1
Astronomy Astrophysics	1	1
Chemistry Multidisciplinary		2
Materials Science Multidisciplinary		2
Physiology	1	1
Public Environmental Occupational H		2
Agronomy		1
Engineering Chemical	1	
Engineering Multidisciplinary	1	
Geology		1
History Philosophy Of Science		1

**Total number of outputs:** outputs of the team published during the evaluated period 2015-2019.

**Evaluated outputs:** selected outputs submitted by the team to the Phase I of evaluation.

**Outputs used for bibliometry:** subset of all outputs registered in the Web of Science; document type: article, review or proceedings paper.

**Quality of outputs by journal ranking:** number of outputs in top decile (1\*) and quartiles (1-4) by AIS of journals; n. a. - outputs in journals without AIS; orange: outputs from the Phase I, blue: the other outputs of the team.

**Quality of outputs by intensity of citations:** number of outputs in the top decile (1\*) and in quartiles (1, 2, 3+4) determined from the list of outputs ordered by the number of citations (downloaded from the Web of Science at the beginning of evaluation) for each subject category, year, and type of output; n. a. – the data are not robust enough for relevant judgement; orange: outputs from the Phase I, blue: the other outputs of the team.

**Types of collaboration:** outputs created exclusively in a particular institute are marked by A1, outputs created within national cooperation by max. 5 organizations are marked by B, outputs created within international cooperation by max. 5 organizations are marked C, outputs created within large collaboration exceeding 5 organizations are marked D, outputs created within large international collaboration are marked E. It is distinguished by marking B1/B, C1/C and D1/D whether the output has/does not have a corresponding author from a particular team.

**Field structure of outputs:** number of outputs of the team in different subject categories (subfields); if the output is assigned to more than one field, the field where the publication performs best (assessed by Quality of outputs by journals ranking) is taken; the table shows up to 20 fields.

**Detailed explanation of the indicators is provided in the Methodology of evaluation, Annex 2 – Bibliometrics.**